

# The FCB Project Nigeria

Presented by  
Mark 'Dog' Jones Phillips

In Association  
with  
The Stockholm RIB Centre / MOC Limited, Sweden -  
[www.maritimeoc.com](http://www.maritimeoc.com)

# ARCO / MOC Operational Vessels

Pre – HSBO 2010

**MV JULIE**



**ER- MULTI TASK VESSEL**



# Support Fleet

Pre – HSBO 2010

**Worker – Support Vessels**

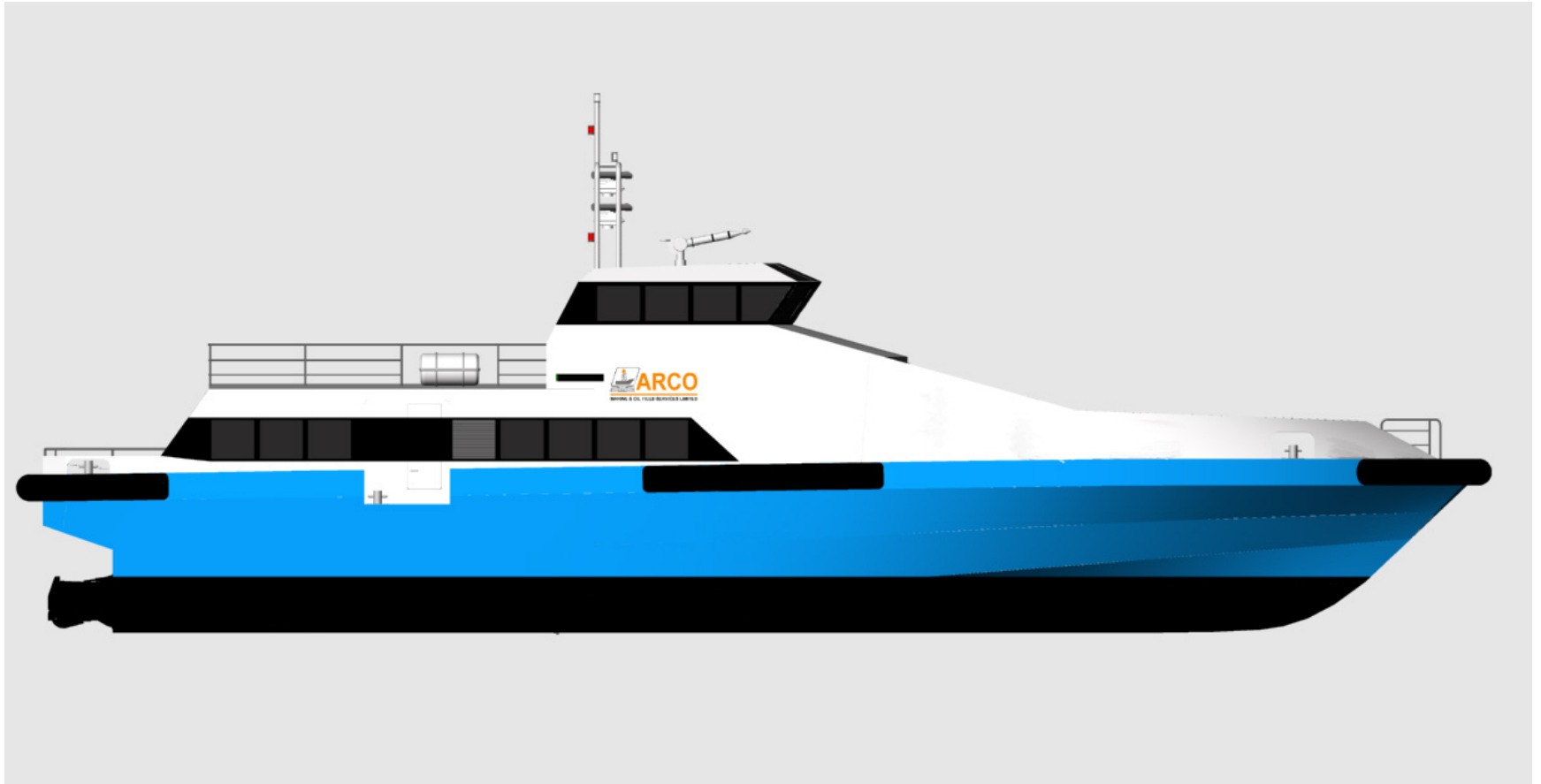


**Limited RIB Support**



# The F.C.B. Project – Nigeria

NEW TONNAGE



# The F.C.B. Project – Nigeria

6 x 10 Meter RIBs to be supplied by Stockholm RIB Centre



# The Cast

**Oil Companies**

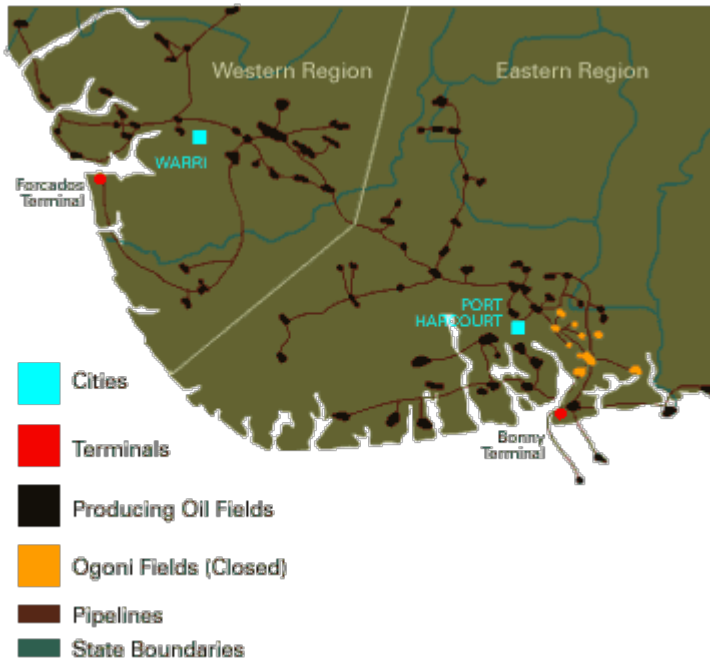


**Militants**



# Delta States Operation

## Operational Areas



## Same reasons for unrest !!!!!



# The FCB Project - Nigeria

## The F.C.B. PROJECT IN NIGERIA IS A MARINE and OFFSHORE SECURITY SUPPORT FACILITATION

**The aim of the FCB Operation is to upgrade and:**

- **Provide safe marine logistic transport to offshore crew and support personnel**
- **To act as interception vessels in marine security, search and rescue and on-going militant matters**
- **To be utilised for base to offshore inter-field transfers (cargo and crew change facilities)**
- **To act as surveillance vessels and liaise with community support, undedicated assets in the field or on-shore and dedicated naval and intelligence assets**



# The FCB Project – Nigeria / Operational Hazards and Constraints

- Vast areas of waterways with many miles of uncharted water and unknown hazards
- Ethnic unsettlement and unrest to cope with
- Changing terrain and navigational hazards
- Weather and visibility restrictions
- Poor infrastructure and marine support back up facilities
- Lack of dedicated emergency maritime rescue or aviation incident support

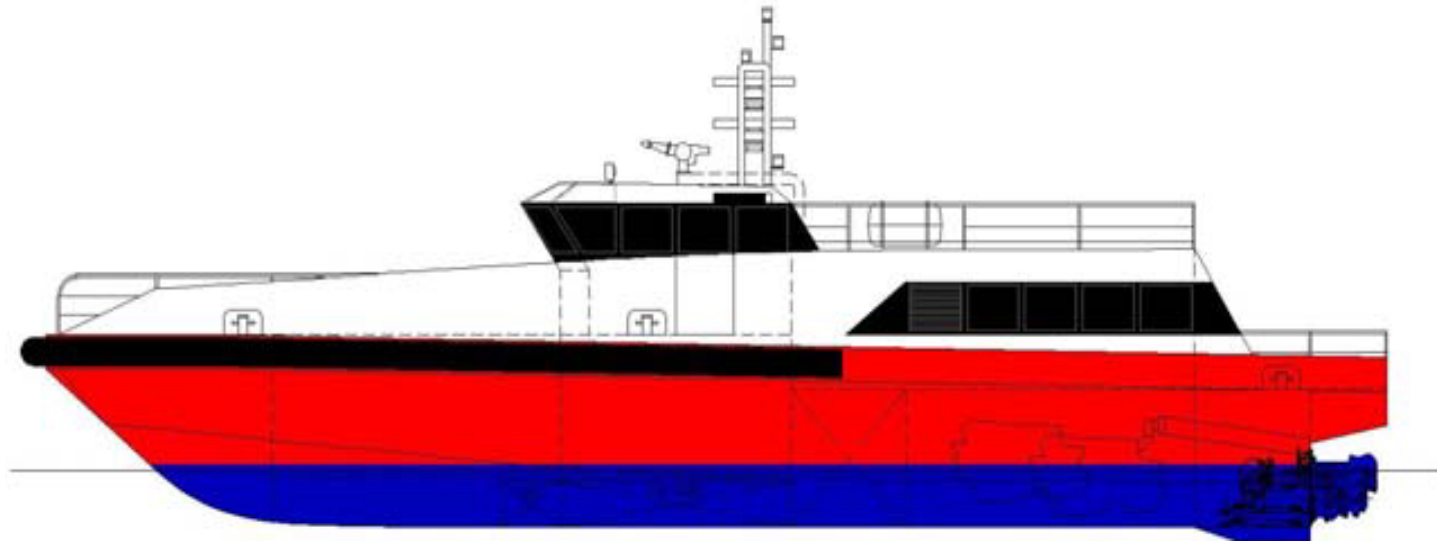


# The FCB Project – Niger Delta Operational Area



# Project Planning

- **Source 3 x different size FCB Craft suit for purpose**
- **(2 x 15 – 2 x 20 – 2 x 25 meter vessels) min speed 34 knots fully loaded**
- **Design landing and transfer facility to suit numerous marine applications**
- **Train suitable crew with a bespoke designed course with on-going training for all ranks and support crew (WBV Included)**
- **Complete intelligence, maritime routes and operational systems in the working areas offshore and the inland waterways**
- **Information and experience gained from the Worker and ERV Projects were used to great effect to plan the project**



### **SBF SEA TITAN 20 - PERFORMANCE**

- 34.5 knots Loaded
- 40.5 knots Lightship
- Main engines (3) x MAN D 2842 LE405 (662kW / 900hp @ 2100rpm) Heavy Duty rating
- Gear-boxes (3) x ZF 2050 marine
- Propulsion (3) x Hamilton HM403 water-jets
- Generator Sets (2) x 30kVA 50Hz

# Operational Areas



# Multi Marine Cover





## **FCB LANDING AREA**

- **To ensure safe and quick personnel transfers a specialist launching bay has been designed for each rig leg which has vessel facilitation as well**

# The FCB Project – Nigeria

## ETHNIC AND TRIBAL MILITANT SITUATION





## **FCB OPERATION DATA**

**A lot of the operational areas have restricted access and smaller 'Worker' boats are required with the required provision of 6 x new 10 meter RIB units to add to the fleet this year**

**The project involves working closely with dedicated and undedicated resources when available, on land or at sea with local communication and updated intelligence as one of the main factors**



# FCB Programme Summary

- To continue to improve all resources and utilise the fleet to it's maximum potential
- To provide on-going training for crews and support facilities
- To work with the local authorities and provide a safe and efficient service for the operating companies with as little disruption for the local community
- To add to the fleet and update vessels, training and support assets with a continuous and regular programme and system

**Marine Training – Consultancy – On Location**

**[www.maritimeoc.com](http://www.maritimeoc.com)**