

HighSpeedBoat OperationsForum





 **Ullman**
PROTECTING PEOPLE

Model: Capelli 750 Work
LOA: 7.5 meter
BEAM: 2.97 meter
Inside Beam: 1.59 meter
Dry weight: 850 kg



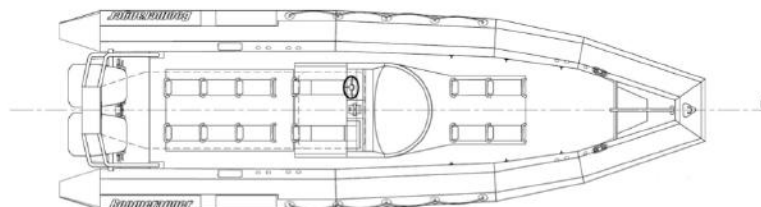
Contact during HSBO 2014:
Mr. Jacob Ullman , Mob +46 709 407017
e-mail: jacob@Ullmans.com

HSBO
HighSpeed
BoatOperations



Boomeranger

www.boomeranger.fi



Boomeranger A-950

LOA: 9,6 m
BEAM: 3,0 m
Inside Beam: 1,8 m
Dry weight: 2600 kg
Fuel Capacity: 720 ltr
Top Speed: 53 kts

Drive Line(s): 2x Yamaha F300
Optional Drivelines: Inboard + sterndrive
Special Features: Also available in GRP.

Contact during HSBO 2014:

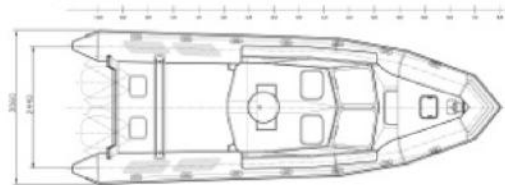
Mr. Ilkka Pentikäinen , Mob +358 40 7721 700
e-mail: ilkka.pentikainen@boomeranger.fi

HSBO
HighSpeed
BoatOperations



C-RIB™

www.c-rib.se



**C-RIB
Patrol Police Rescue**

27 ft

LOA: 8.5 m
BEAM: 3m
Inside Beam: 1.8m
Dry weight: 2100 kg
Fuel Capacity: 250L standard
Top Speed: 35 knots

Drive Line(s): Hyundai 250 hp Diesel
Optional Drivelines: Outboard(s) or Jet
Special Features: All-weather, multi-task platform. Trailerable. Available in other sizes. Ballistic Protection available.
Price: From 90 000€ with outboard
Demo Boat available 112 000€

Contact during HSBO 2014:
Mr. Peder Brun , Mob +46 706 692 953
e-mail: brun@c-rib.se

HSBO
HighSpeed
BoatOperations



www.DahlNaval.se



Dahl 24

LOA: 7,6m

BEAM: 2.95m

Dry weight: 1000kg

Fuel Capacity:

Contact during HSBO 2014:

Mr. Janis Petrov +46705454258

e-mail: janis.petrov@dahlnaval.se

Top Speed: Approx 55kn

Drive Line(s): 300hp Evinrude E-tec

Optional Drivelines: 200-400hp inboard

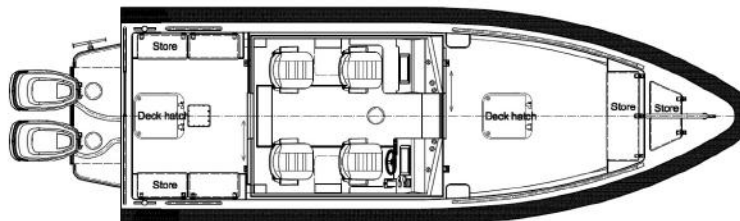
Passengers: 14

HSBO
HighSpeed
BoatOperations



Vector ProBoat

www.vectormarine.se



Vector 28 Wheelhouse

LOA: 10,10
BEAM: 3,00
Inside Beam: 2,25
Dry weight: ca 3200
Fuel Capacity: 580L
Top Speed: 55+ knots

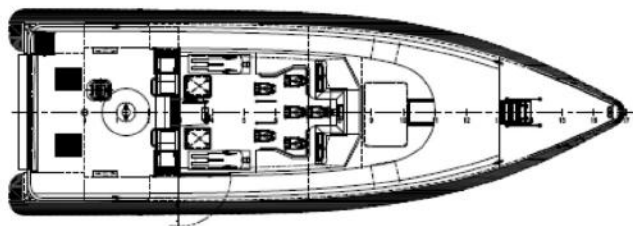
Drive Line(s): 2 x Suzuki DF 300
outboards
Optional Drivelines: Diesel & sterndrives,
or Diesel & waterjets

Contact during HSBO 2014:
Mr. Fredrik Hettemark , Mob +46 70 268 9120
e-mail: fredrik@vectormarine.se

HSBO
HighSpeed
BoatOperations



Koninklijke Nederlandse Redding Maatschappij
www.knrm.nl



KNRM Nh1816 (SAR 1906) All Weather lifeboat

LOA: 18,65 m

BEAM: 6,54 m

Dry weight: 35000 kg

Fuel Capacity: 5500 ltr

Top Speed: 33 knots

Crew: 6

Drive Line(s): 2 x MTU V8 2000 M84L,
2x Hamilton Jets 571

Contact during HSBO 2014:

Mr.G.M.J.H. Burema (Captain RNLN (ret)),

Mob +316 22860302

e-mail: g.burema@knrm.nl



North Sea Boats[®]

<http://www.northseaboats.com/>



X2K

LOA: 11,3 meter
BEAM: 3,20 meter
Dry weight: 2450 kg
Fuel Capacity: 850 liter
Top Speed: 54 knot

Drive Line(s): 2 times 300 hk Suzuki

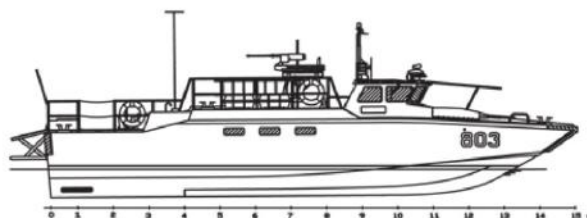
Contact during HSBO 2014:

Mr. John Lundin , Mob +62 811 3537777
e-mail: john@northseaboats.com

HSBO
HighSpeed
BoatOperations



 **N. SUNDIN
DOCKSTAVARVET AB**
www.dockstavarvet.com



Model Name Combat Boat 90H

LOA: 14.90 m
BEAM: 3.85 m
Dry Weight: 14 tons
Fuel Capacity:
Top Speed: 43+

Drive Line(s): 2 x VOLVO PENTA D13 / Rolls
Royce FF450 Waterjets

18 Pax

Contact during HSBO 2014:
Mr. Magnus Sörenson, Mob +46 70 328 96 06
e-mail: ms@dockstavarvet.se

HSBO
HighSpeed
BoatOperations



www.marinediesel.nu

Blue-Spirit Rib/Propulsion Platform

LOA: 9.3m
BEAM: 3m
Inside Beam: 2m
Dry weight: 3t
Fuel Capacity: 200L
Top Speed: 50knots

Drive Line(s): Marinediesel
VGT500/Konrad 660 sterndrive

Contact during HSBO 2014:
Mr. Thomas Jakobsson , Mob +46 706339500
e-mail: thomas@marinediesel.nu

HSBO
HighSpeed
BoatOperations



36
P1 SUPERSPORT

www.GoldFishBoat.com

GOLDFISH
BOAT



Model: 36 P1 SuperSport
LOA: 11.22m/36'10"
BEAM: 3.20m/10'6"
Beam (deflated): 2.37m /7'9"
Dry weight: 3200kg / 7055Lbs

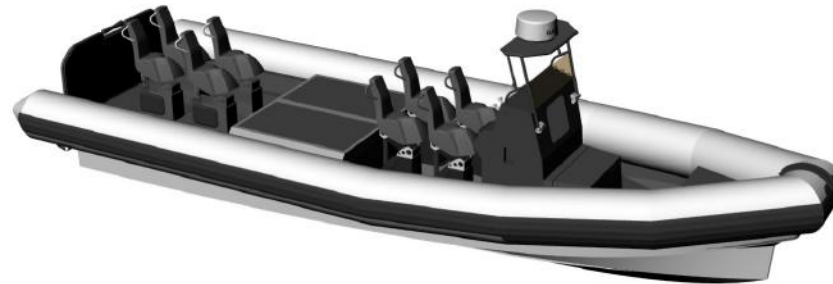
Drive Line(s): Surface stern drive
2*Yanmar D-max (760 bhp)
Top Speed: 66-102kts/76-117mph

Contact during HSBO 2014:

Mr. Fredrik Andreas Bolstad, Mob +47 41 48 49 76
e-mail: fbolstad@goldfishboat.com



HSBO
HighSpeed
BoatOperations



www.sillinger.com



SILLINGER 950 RIB UM

LOA: 9,45 m
BEAM: 3,30 m
Inside Beam: 2,10 m
Dry weight: 3800 kg
Fuel Capacity: 2 x 300 l
Top Speed: 42 knots

Drive Line(s): engines : 2x350hp Yanmar ,
waterjet : 2xUltraJet 350
Optional Drivelines: Out board / Zdrive

Contact during HSBO 2014:

Mr. David Thual , Mob +33 617 31 61 95
e-mail: david.thual@sillinger.com

Mr Guillaume Godde , Mob +33 661 07 49 00
e-mail : guillaume.godde@sillinger.com

HSBO
HighSpeed
BoatOperations



www.norsafe.com

Munin S1200 High Speed Patrol Vessel

LOA: 11,7m

BEAM: 3,5m

Dry weight: 6500kg

Top Speed: >60 knots

Drive Line(s): 2x IVECO FPT
N67 with Arneson ASD 8

Contact during HSBO 2014:

Mr. Thomas Skaala , Mob +47 97 09 53 01

e-mail: thomas.skaala@norsafe.com

HSBO
HighSpeed
BoatOperations



www.norsafe.com

Magnum 850 Fast Rescue Craft

LOA: 8,87m

BEAM: 3,27m

Dry weight: 5,400kg

Top Speed: 48 knots

Drive Line(s): 2 x Marine

Diesel VGT 450 with Hamilton

274 Waterjets

Contact during HSBO 2014:

Mr. Thomas Skaala , Mob +47 97 09 53 01

e-mail: thomas.skaala@norsafe.com

HSBO
HighSpeed
BoatOperations



RESCUERUNNERTM

LOA: 3,6 m
BEAM: 1,5 m
Draght: 0,3 m
Dry weight: 350 kg
Fuel Capacity: 70 l
Top Speed: 40 kn
Drive Line(s): Waverunner VX110 4-stroke
Optional: Waverunner VX1800 4-stroke

Contact during HSBO 2014:
Mr. Erik Rudelius +46(0)303 230705
erik@safeatsea.se
www.safeatsea.se

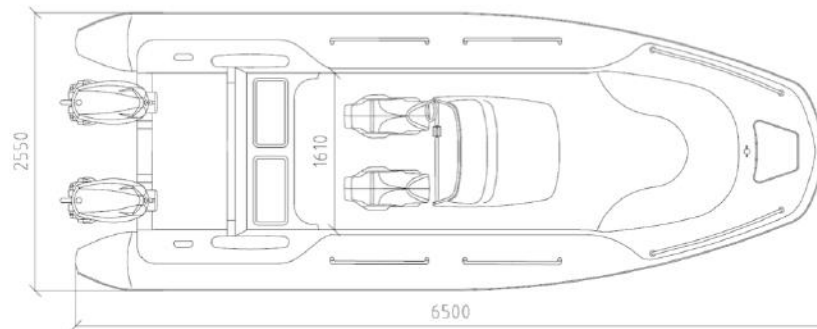
The RescueRunner is designed especially for Search & Rescue (SAR) and to endure the roughest conditions. The RescueRunners construction is based on over 100 years of experience of SAR work within the Swedish Sea Rescue Society and prize awarded for the innovative design .

HSBO
HighSpeed 
BoatOperations



**2Fast
Boats**

www.2fast-boats.com



2Fast 650rib

LOA: 6,50 m
BEAM: 2,55 m
Inside Beam: 1,61 m
Dry weight: 1200 kg
Fuel Capacity: 280 L
Top speed: 43 kn

Drive Lines: 2x Evinrude E-tec 90

Contact during HSBO 2014:
Mr. A.F. Reichgelt, Mob +31 624 232 900
e-mail: info@2fast-boats.com

HSBO
HighSpeed
BoatOperations

RIBs from 6.8m to 12m , inboard, outboard and waterjet options available and Custom built to order.



Scorpion 12m Patrol



Scorpion Sport 78

LOA: 7.8m
BEAM: 2.75m
Inside Beam: 2.2m
Dry weight: 1600kgs
Fuel Capacity: 450 l
Top Speed: 50knots

Drive Line: Outboard mercury verado
250hp

Special Features: Exceptional class
leading ride quality; good for long hours at
sea; Comfortable and Dry; Cat b Off Shore
boat; Race and Endurance Proven.

Contact during HSBO 2014:

Mr. Patrick Byrne , Mob +44 780 164 9451
e-mail: pbyrne@scorpionribs.com

Targa®

The 4x4 of the sea

www.targa.fi



Targa 44

LOA: 14.36 m
BEAM: 3.95 m
Dry weight: 10 500 kg
Fuel Capacity: 1 500 l

Top Speed: 37 kn
Drive Line(s): IPS 600 (2 x VP D6-435)
Output: 436,0 Hp
Gear ratio: 1,82:1
Optional Drivelines: sterndrive,
waterjet

Contact during HSBO 2014:
e-mail: info@targa.fi

HSBO
HighSpeed
BoatOperations

Targa®

The 4x4 of the sea

www.targa.fi



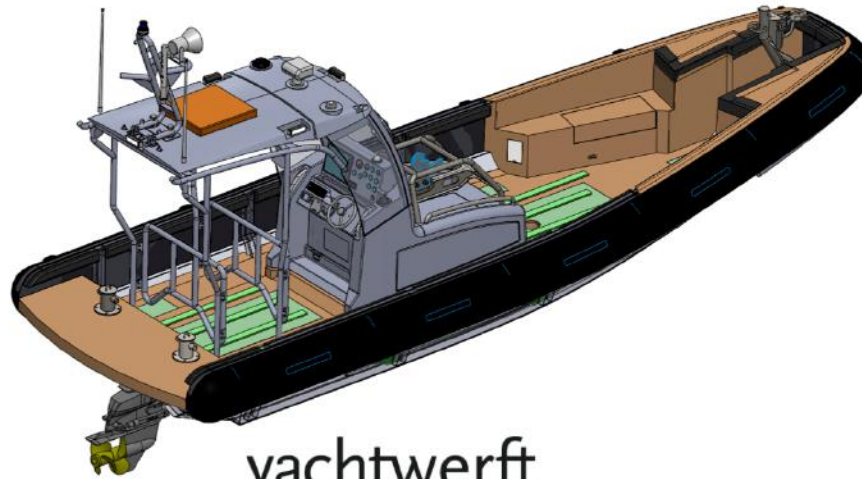
Targa 32

LOA: 10.78 m
BEAM: 3.37 m
Dry weight: 6 300 kg
Top Speed: 38 kn
Fuel Capacity: 800 l

Drive Line(s): 2 x VP D4-300/DPH
Output: 300,0 Hp
Engine Speed: 3500
Gear ratio: 1,76:1

Contact during HSBO 2014:
e-mail: info@targa.fi

HSBO
HighSpeed
BoatOperations



yachtwerft
meyer ○○○

www.yachtwerft-meyer.com



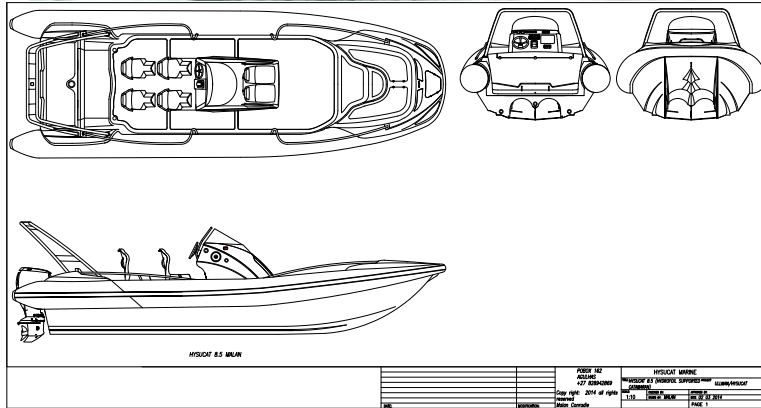
Boarding Boat (RIB) of the German Federal Police (Bundespolizei)

LOA: 8,72m
BEAM: 3m
Inside Beam: 2,3m
Dry weight: 2240kg
Fuel Capacity: 150litre
Top Speed: 40+kts

Drive Line(s): Yanmar 6LPA stern drive
Special Features:
Class (structures) Design to GL HSC | Solas
aCG 5g

Contact during HSBO 2014:
Mr. Jan Meyer, Mob +49 172 40 56 588
e-mail: info@yachtwerft-meyer.com

HSBO
HighSpeed
BoatOperations



HYSUCAT 8,5 Racing EDITION

LOA: 8,5m
BEAM: 2,95
Inside Beam: 2,35
Dry weight: 1600
Fuel Capacity: 200l
Top Speed: 56knots

Drive Line(s): Twin 150 Evinrude Etec HO

Contact during HSBO 2014:
 Mr.Mathias TERNER , Mob +351 96 9410541
 info@hysucatmarine.com

