



NORWEGIAN ARMED FORCES
Royal Norwegian Navy



The Norwegian Navy

HSBO Gothenburg, 6-8 May 2014

Fast patrol boat navigation

Cdr (Sg) Jon Ivar Kjellin

Lt.Cdr Jon-Sølve Fredheim

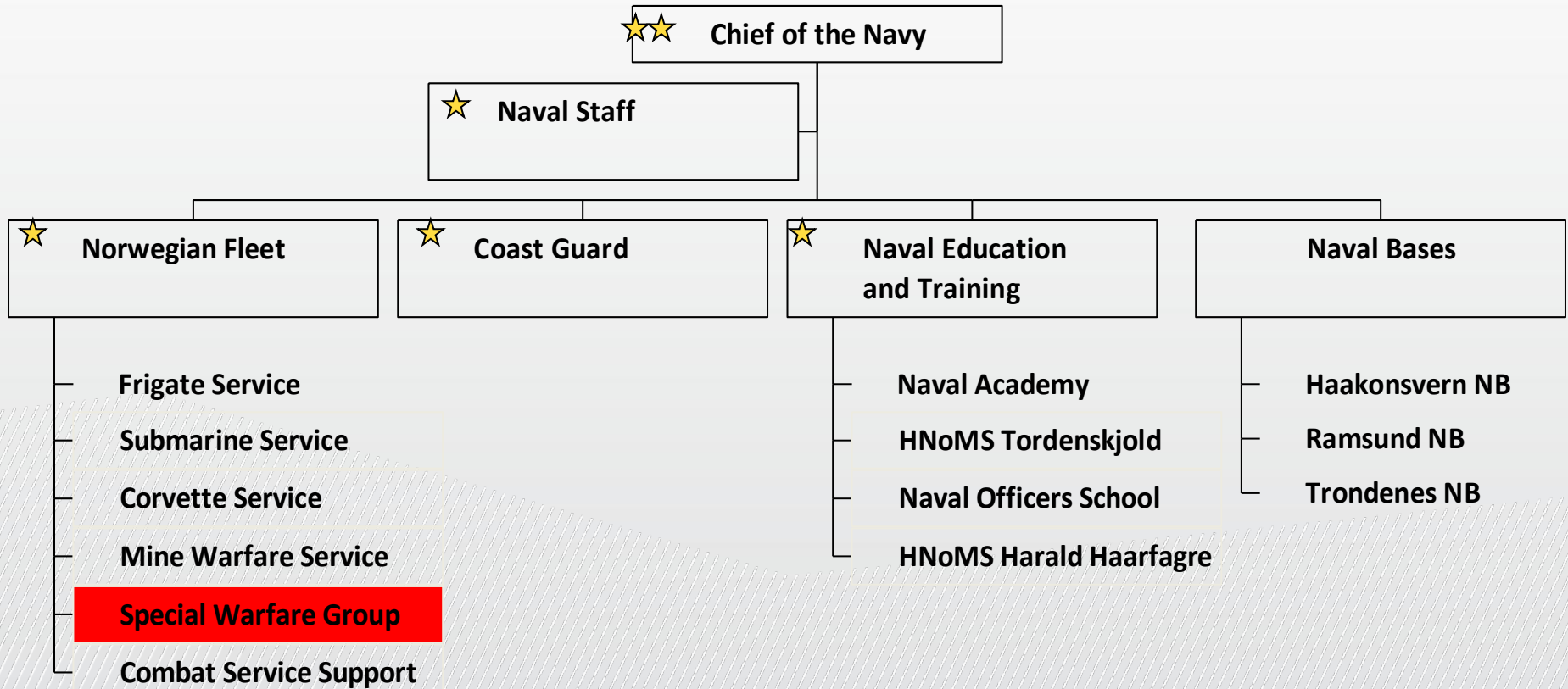


Agenda

- Organization
- Navigation procedures and education



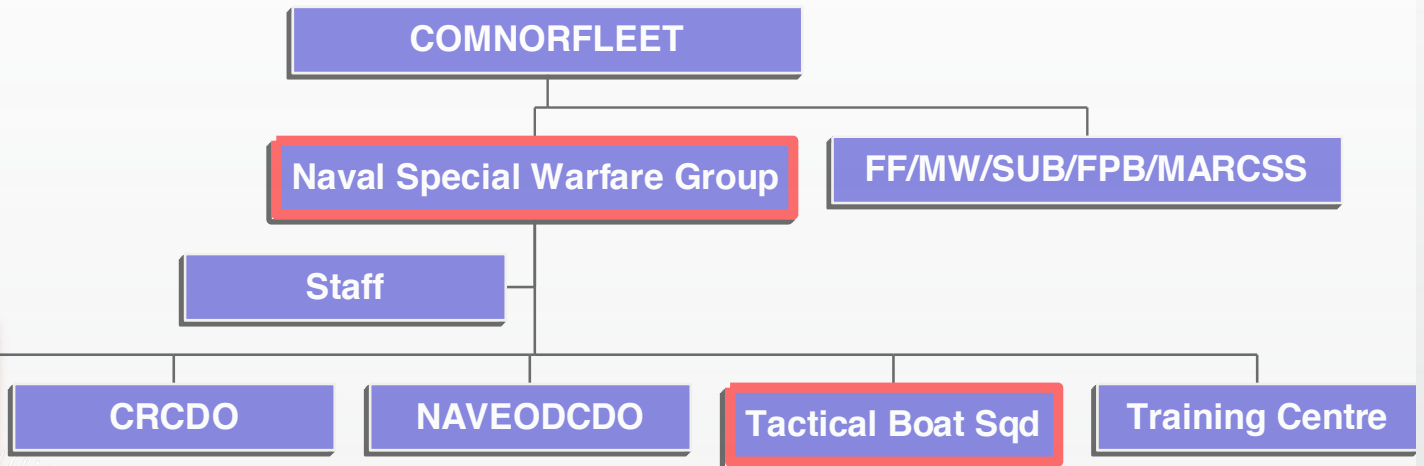
RNoN organisation



Officers, senior ratings, civilians: 2370
 Conscripts: 1800
 Total strength: 4170

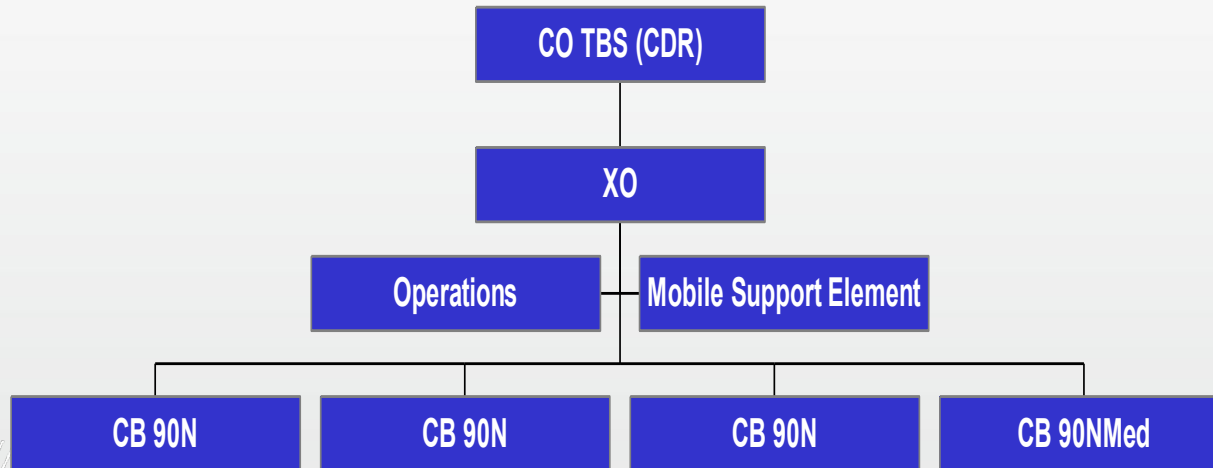


NSWG - Organization





Tactical Boat Squadron





CB 90N Midlife update

- New engines
V8/900hp
- RWS
- Additional weapon
stations
- Navigation
- C2IS





NORWEGIAN ARMED FORCES
Royal Norwegian Navy

Navigating in Norway





Navigation

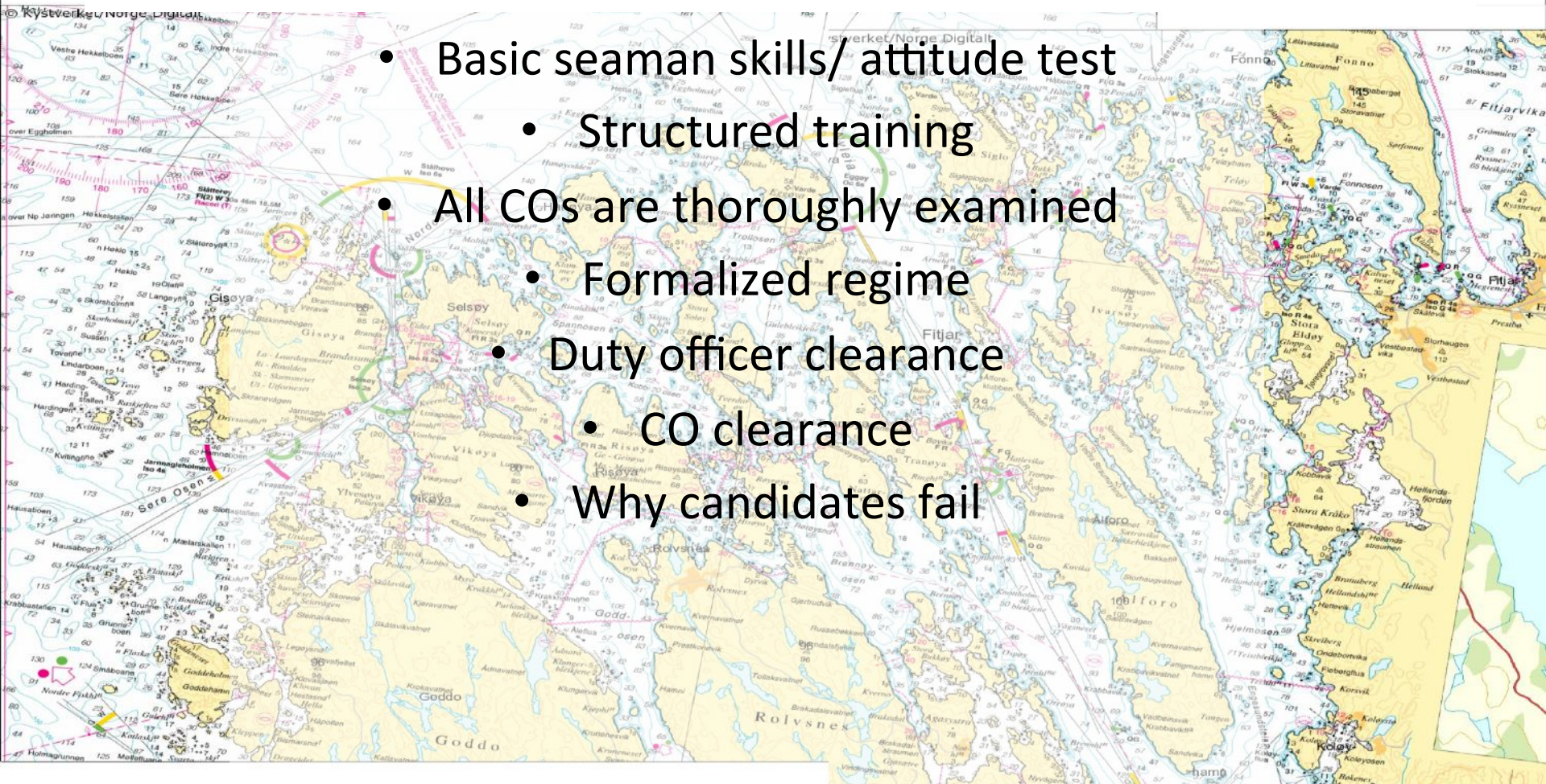
- High speed, narrow waters
- Extreme weather and terrain
 - We like to see land contours on radar
- Extremely unforgiving environment
 - Skills
 - Attitude
 - Humility





How to make a CB90 Navigator

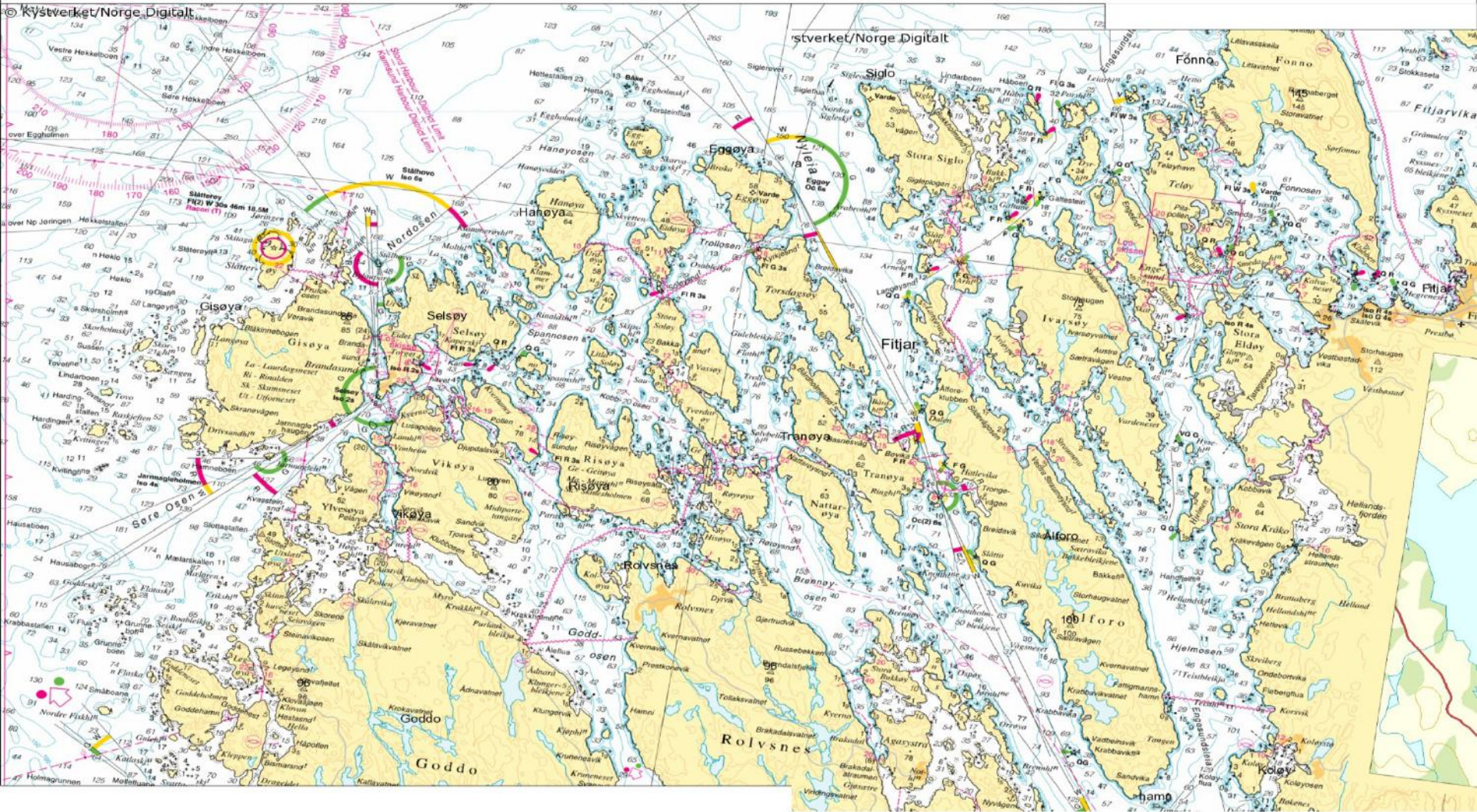
- Basic seaman skills/ attitude test
 - Structured training
- All COs are thoroughly examined
 - Formalized regime
 - Duty officer clearance
 - CO clearance
- Why candidates fail





NORWEGIAN ARMED FORCES

Royal Norwegian Navy





Phases in navigation

0,2 nm until turn:

- Turn-object
- Next heading
- Headmark/ no headmark
- (Hazards on next course)

Pre-turn-phase

During turning:

- Wheel command
- Reset stopwatch and Triplog
- Headmark
- Focus outside!

Turn-phase

Well into your leg/course:

- Always know how far left until next turn / hazards.
- Logbook
- Communications / PCS
- Information to crew
- Memorize next heading

Transit-phase

0,1 nm into your leg/course:

- Control headmark
- Control heading
- Hazards on this leg/course
- Find the hazards
- Correct heading?
- DTG / TTG
- Drift

Control-phase



Navigation

Success criterias

- High speed and narrow waters
 - Basic and simple methods of positioning
 - Headmarks and turn points
 - Always be ahead of your plan
 - Dynamic use of speed
 - The answer to all your problems is outside your window, not in your charts or computer screen.
 - Use your entire bridge team

Questions?

