



HIGH SPEED CRAFT OPERATIONS IN MARINE REGION OF THE HONG KONG POLICE FORCE

**Presented by
Chief Inspector of Police
Tim Worrall**





Introduction

The Hong Kong Special Administrative Region is a part of the People's Republic of China.

The Region is independently responsible for all domestic and internal security matters.

Marine Region of the Hong Kong Police is responsible for all aspects of law enforcement within the waters of Hong Kong and for liaison with maritime law enforcement agencies from adjacent Guangdong Province.

Mainland China

Hong Kong

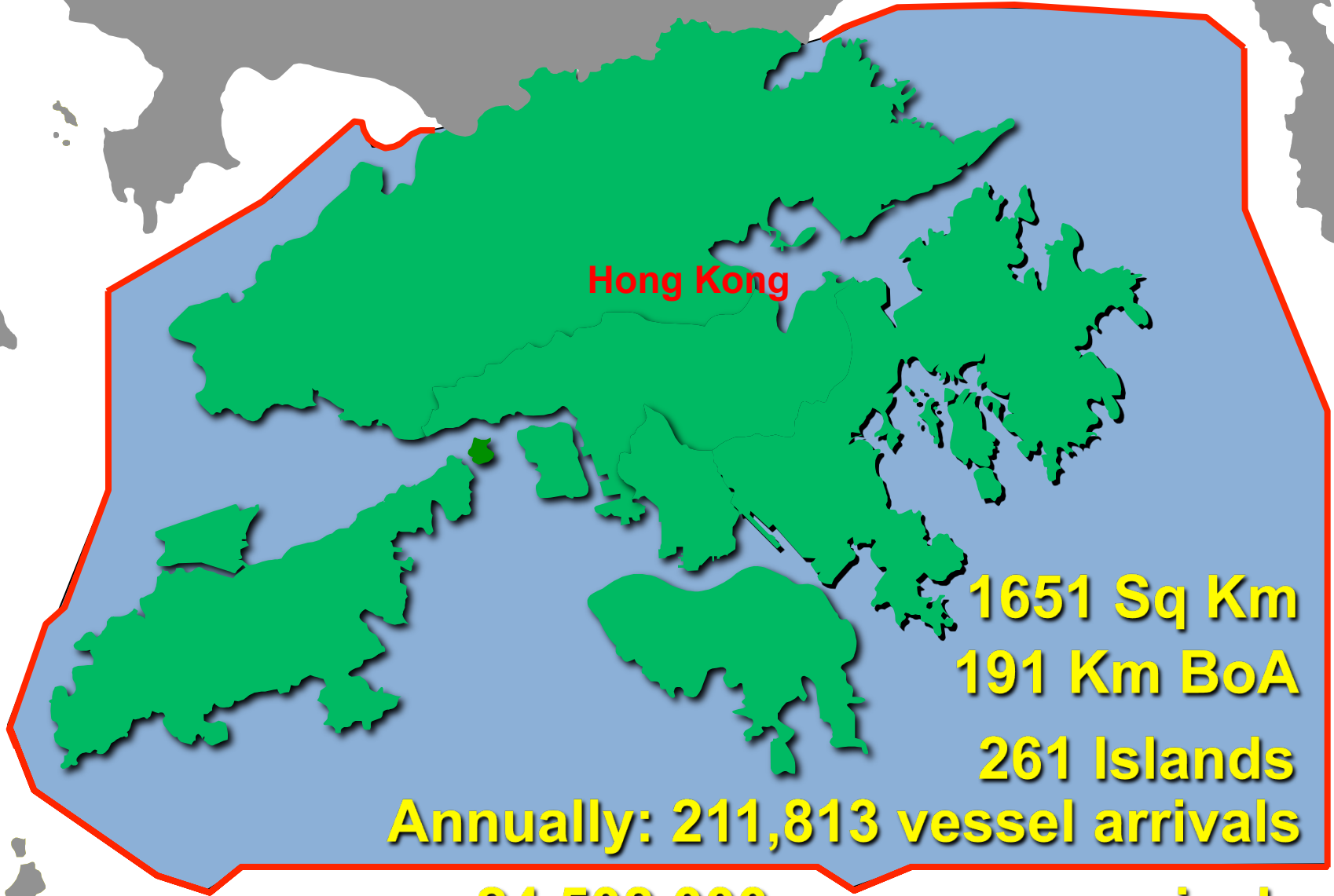
1651 Sq Km

191 Km BoA

261 Islands

Annually: 211,813 vessel arrivals

24,508,000 passenger arrivals





Marine Region

Marine Region is one of six Regions within the 28,318 strong Hong Kong Police Force.

Established in 1872

Composed of some 2,259 officers operating a fleet of 142 vessels

The nature of operations range from anti-crime, smuggling, illegal immigration, counter terrorism and Search & Rescue operations.



Policing Strategy

The Region practices a 'Versatile Maritime Policing Response Strategy'.





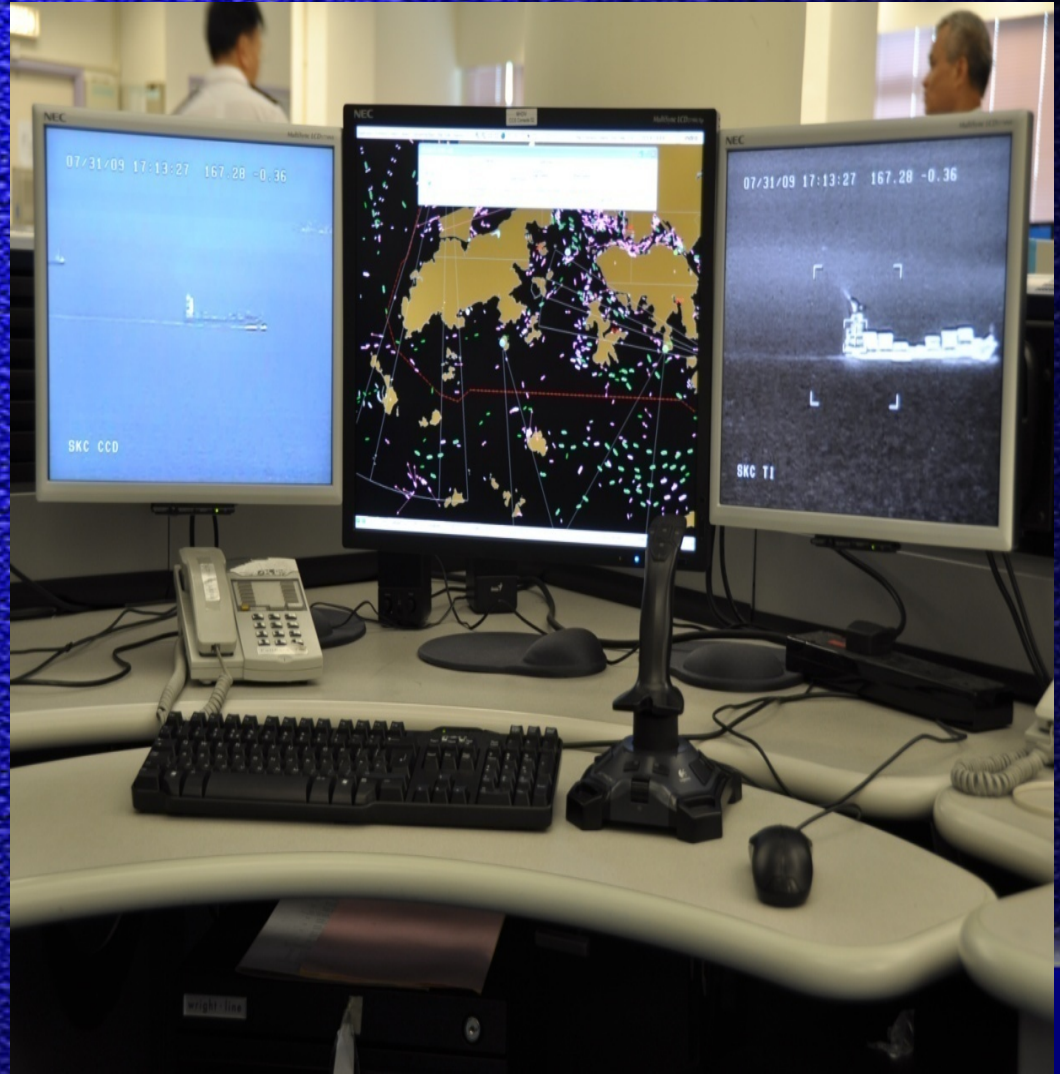
Versatile Maritime Policing Response Strategy (VMPR)

VMPR was introduced as the Region moved towards the introduction of a fleet comprised of smaller and faster vessels that have their deployment overseen by a 'Central Command System' (CCS).





Central Command System





High-Speed Craft In Service

General Watch & Ward



Medium Patrol Launch

LOA	: 19M
Speed	: 45Kts
Crew	: 5
In service	: 17



Divisional Fast Patrol Craft

LOA	: 10M
Speed	: 50Kts
Crew	: 3
In service	: 12
To be procured	: 23



High-Speed Craft In Service

High Speed Interception



DAMEN Sea-Stalker 1500

LOA: 14.8M Speed: 60Kts Crew: 5 In service: 5



High-Speed Craft In Service

High Speed Interception & Forced Boarding



Fast Pursuit Craft

LOA	: 8.5M
Speed	: 50Kts
Crew	: 3
In service	: 8



High-Speed Craft In Service

High Speed Interception Training Vessel



Daai Fei

LOA : 13M

Spd : 45Kts

Crew : 3

In service : 1



Forward Operating Platforms





Illegal Immigration

2010 : Total in HK: 2,340 Total by Marine Police: 1,238

2011 : Total in HK: 1,631 Total by Marine Police: 908

2012 : Total in HK: 340 Total by Marine Police: 212



Illegal Immigration





Counter Terrorism & Maritime Security





Smuggling





Smuggling





Smuggling





Smuggling





Smuggling

Value of Seizures

2010	: HK\$ 76 million	(US\$ 9,795,000)
2011	: HK\$ 58 million	(US\$ 7,475,000)
2012	: HK\$ 17 million	(US\$ 2,191,000)



Types of Target



Daai Feis

Speed: 35-45Kts

Multiple outboard engines

Steel Claded Cockpit

Re-inforced Bow (ramming)



Types of Target



Chung Feis

Speed: 45-65Kts

Multiple outboard engines

Re-inforced Bow



High Speed / Syndicated Smuggling Tactics





High Speed / Syndicated Smuggling Tactics





High Speed / Syndicated Smuggling Tactics





Conclusion





Questions?

