

- Damen philosophy
- Interceptor history of Damen
- Composites design knowledge
- Composites production



Civil Shipbuilding



Naval Shipbuilding





In 45 years from 7 to 9000 employees and from next to nothing to 2 Billion turnover:



- Standard vessels built in series
- Short delivery times
- Hulls / complete vessels on stock!



- Willing to customize according to customer's wishes

HIGH SPEED CRAFT

Standard Series



Stan Tender series

Multi purpose: Pilots, survey, ports
12 -23 m, 18-25 kts



Stan Pilot series

Pilotage (dedicated)
15-22 m, 25-32 kts

Interceptor series

Ultra high-speed patrol (60 kts)
11-26 m, 50-60 kts



SAR series

Search & Rescue (lifeboats)
19m, 34 kts

Fast Crew Supplier series

Personnel + equipment transport
12-67 m, 24-35 kts



Stan Patrol series

River-, harbour- and coastal patrol
12-60 m, 22-35 kts

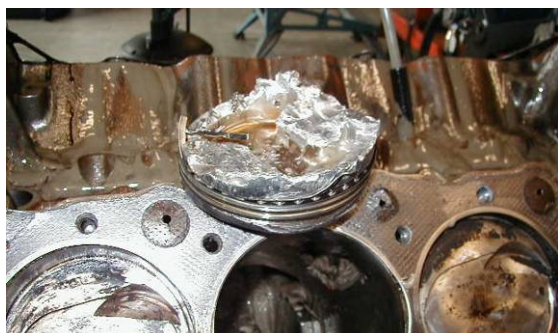
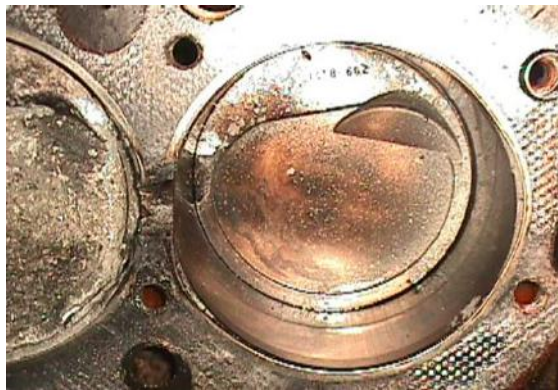
DAMEN INTERCEPTOR HISTORY

5x HK Police Force (ASTF) - 1998



DAMEN INTERCEPTOR HISTORY

5x HK Police Force (ASTF) - 1998 - initially no great success!



DAMEN INTERCEPTOR HISTORY

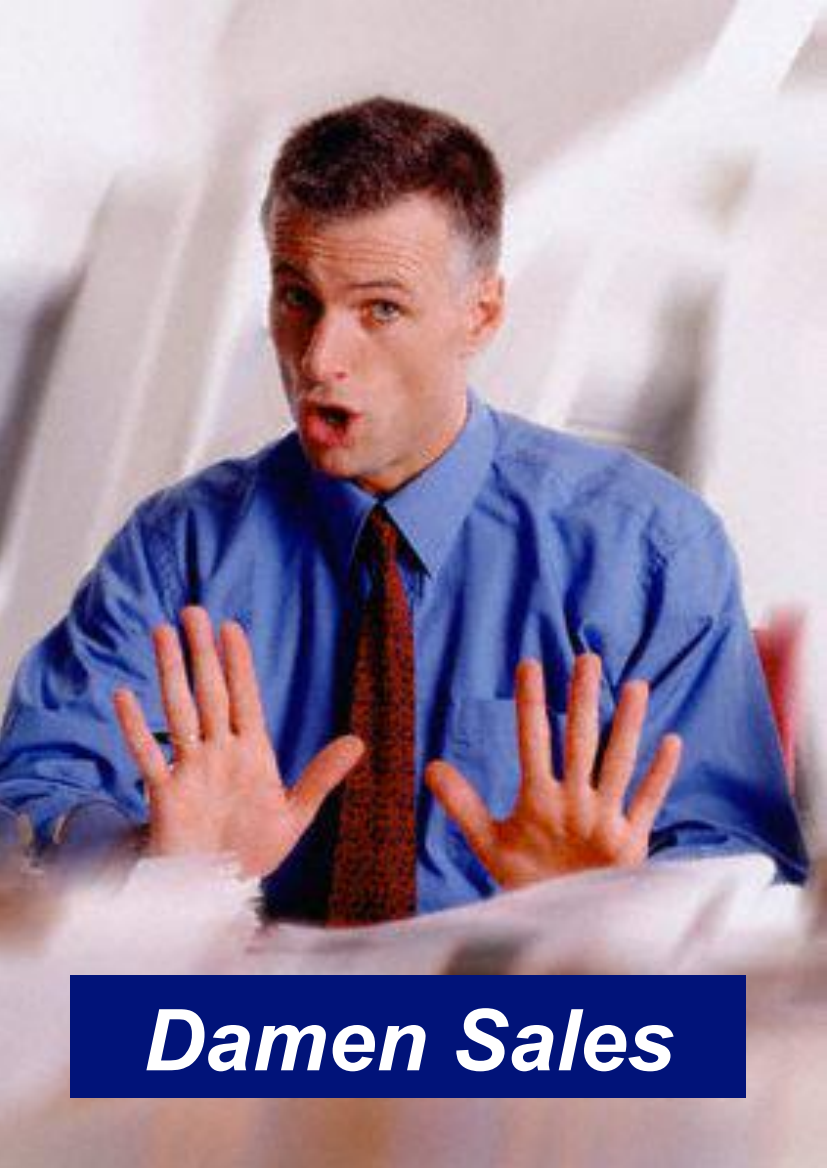
After replacing propulsion installation: successful, still four in service

DAMEN



2003: FRESH START

Plan to step back into the Interceptor world



Damen Sales



2005-2008: FIRST OF SERIES DEVELOPMENT

Designing / Engineering / Mock ups / Building / Trials (Malaysia)



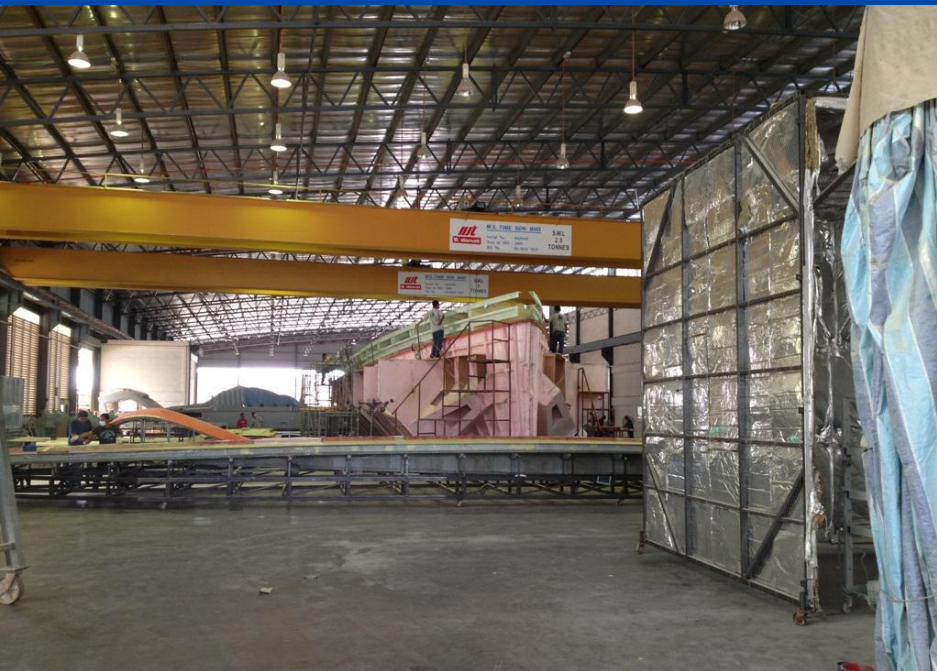
2008-2010: FIRST SHAKEDOWN TRIP

Followed by many more: Would you please break the boat for us....?



DI 1102 PRODUCTION

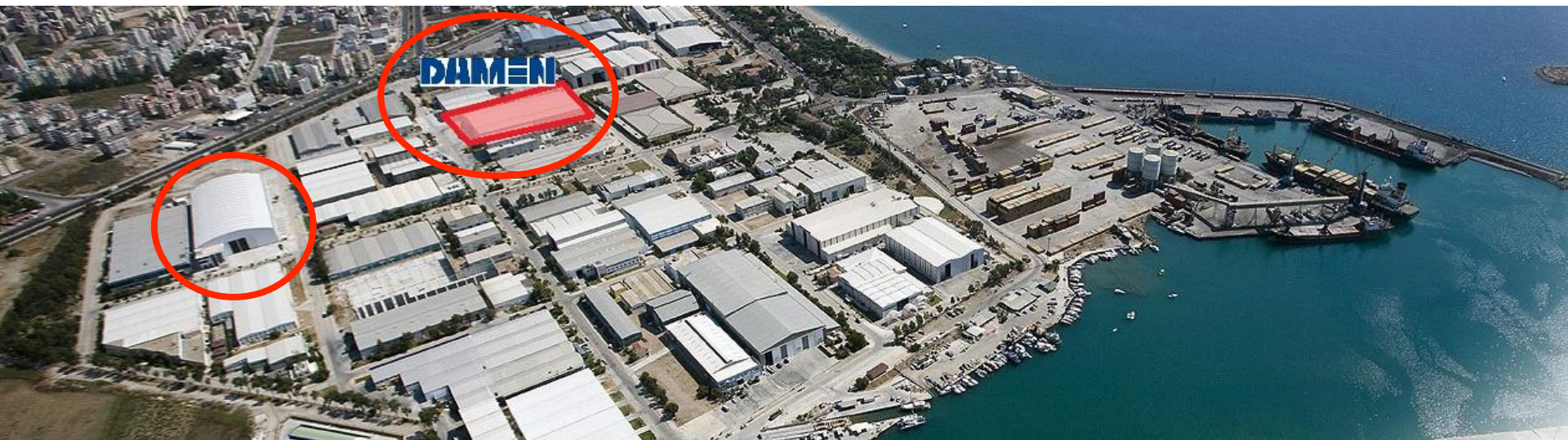
Initially in Malaysia



SINCE JULY 2013: DAMEN SHIPYARDS ANTALYA
Fully climatized composites yard in the Freezone

DAMEN





- High quality people available
(women for fiber laying, men for the rest)
- Turkish people are proud (and nice)
- Low wages
- Freezone
- No punishment to be

WHERE TO GET THE KNOWLEDGE?

“Design for production” in composites is the winner

DAMEN

seaway
Shaping the Future.



PILOT PROJECT

Replacement of the dated Fast Crew Supplier 1605

DAMEN

Requirements for successor:

- Modern hull shape
- 10% lighter
- 10% lower cost price
- Absolutely a tough workboat!





SIGNIFICANT SMALL SHIPS OF 2014

A PUBLICATION OF THE ROYAL INSTITUTION OF NAVAL ARCHITECTS www.rina.org.uk/sigsmallships



DAMEN FAST CREW SUPPLIER 1605 FRP

SERIAL PRODUCTION HAS STARTED

Three production lines: DI 1102, FCS/SPa/SPI 1605 and SPa/SPI 2205

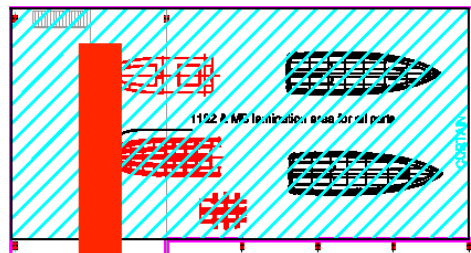


SERIAL PRODUCTION HAS STARTED

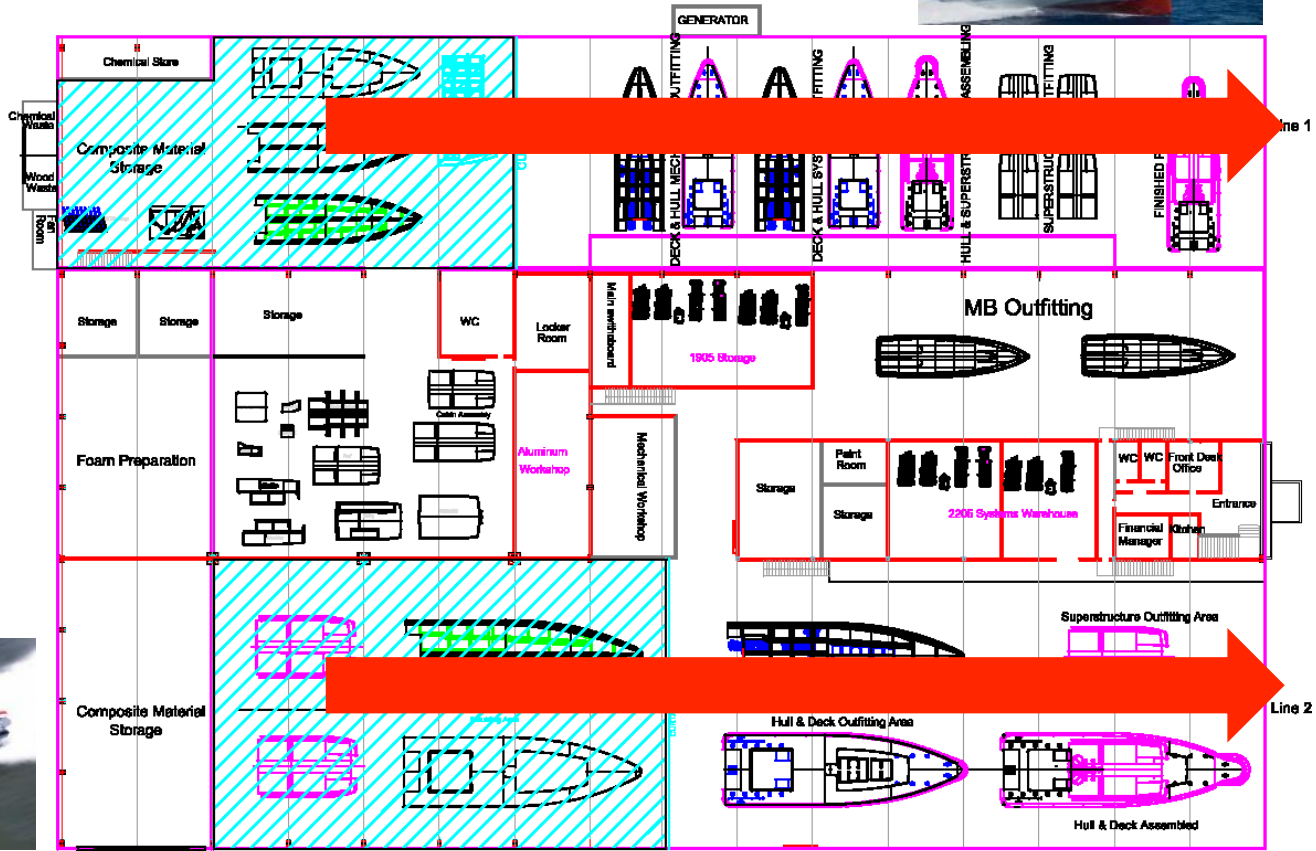
Three production lines: DI 1102, FCS/SPa/SPI 1605 and SPa/SPI 2205



2nd Floor



Ground Floor

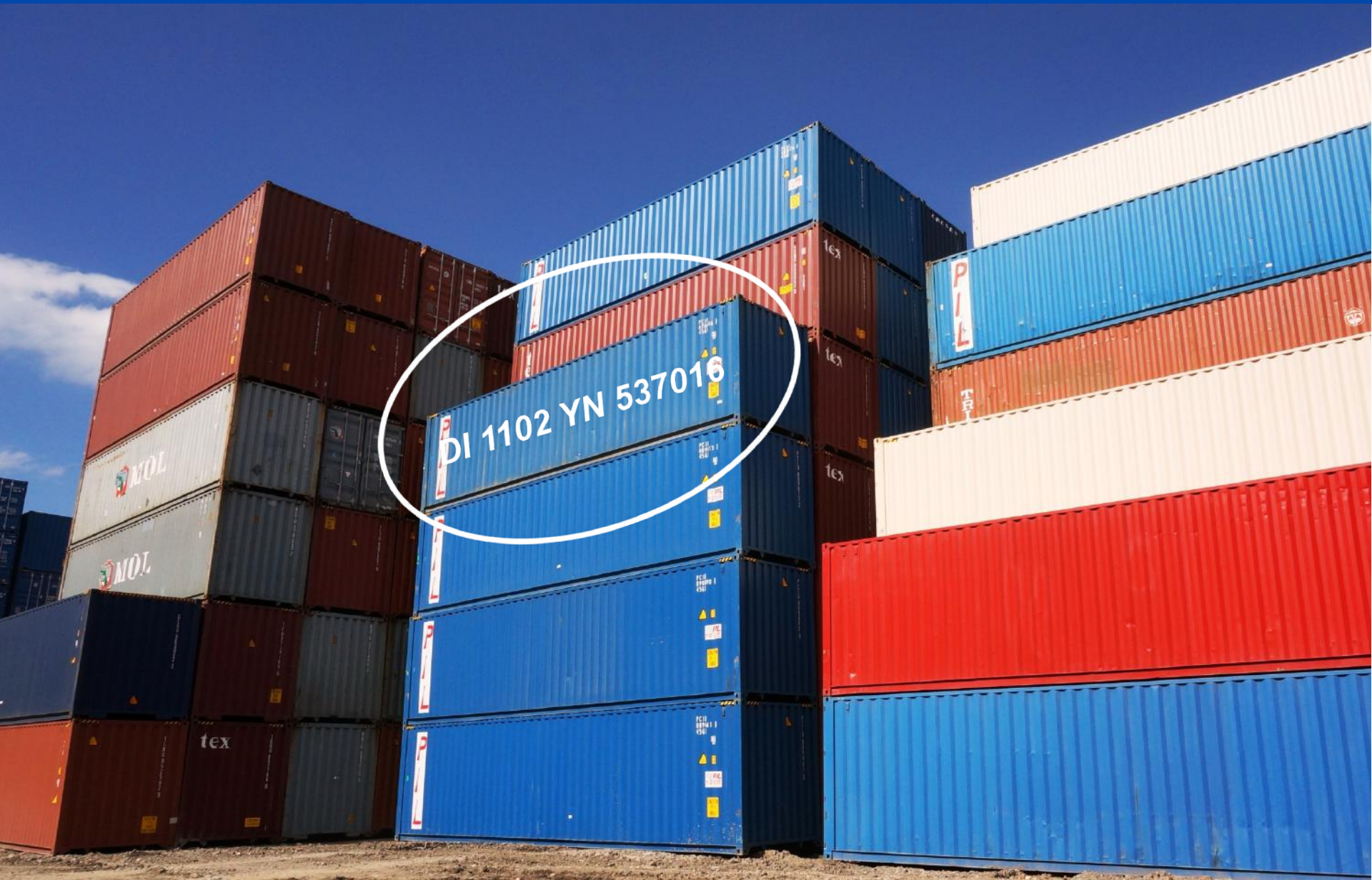


SERIAL PRODUCTION HAS STARTED
Some DI 1102's – almost ready for shipment



SHIPMENT

Drop test with a hard landing



DROP TEST

With a hard landing





1x
(2012)



30x
(2014)



1x
(2013)



4x
(2014)



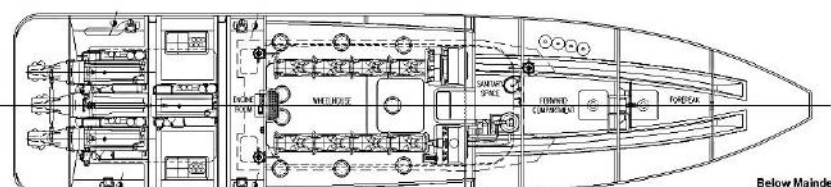
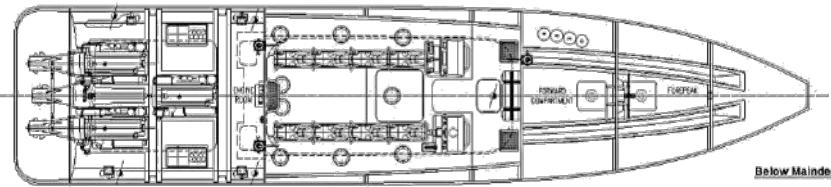
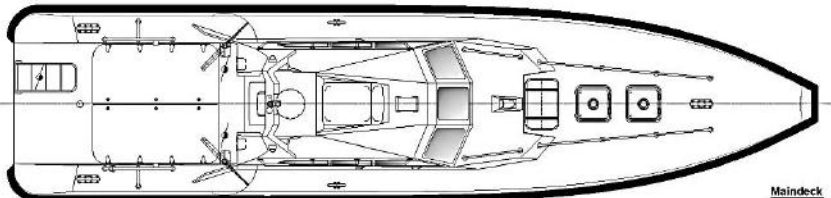
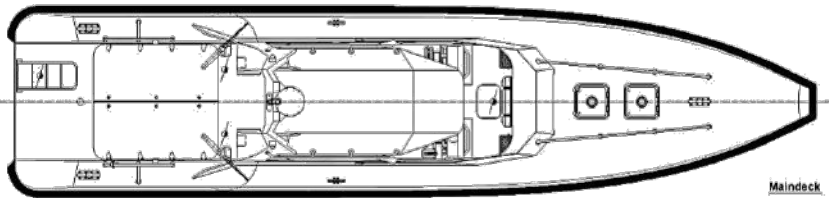
7x
(2014)



6x
(2015)

DI 1503 DEVELOPMENT

Composites, triple engine



3x Volvo D6 + DPR : 53 kts
 3x Marine Diesel + Konrad : 60+ kts



THANK YOU FOR YOUR ATTENTION!