



RAF NAR

„Keeping Comfort at Sea“

May 2016



Taking the '**EMBLA**' to the HSBO 2016

The formidable **Leiftur 1100 RIB**
on an Extreme and Adventurous Voyage

- Reykjavík, Iceland to Gothenburg, Sweden
26 (27) April to 10 May, 2016 -



RAF NAR

Start of the journey

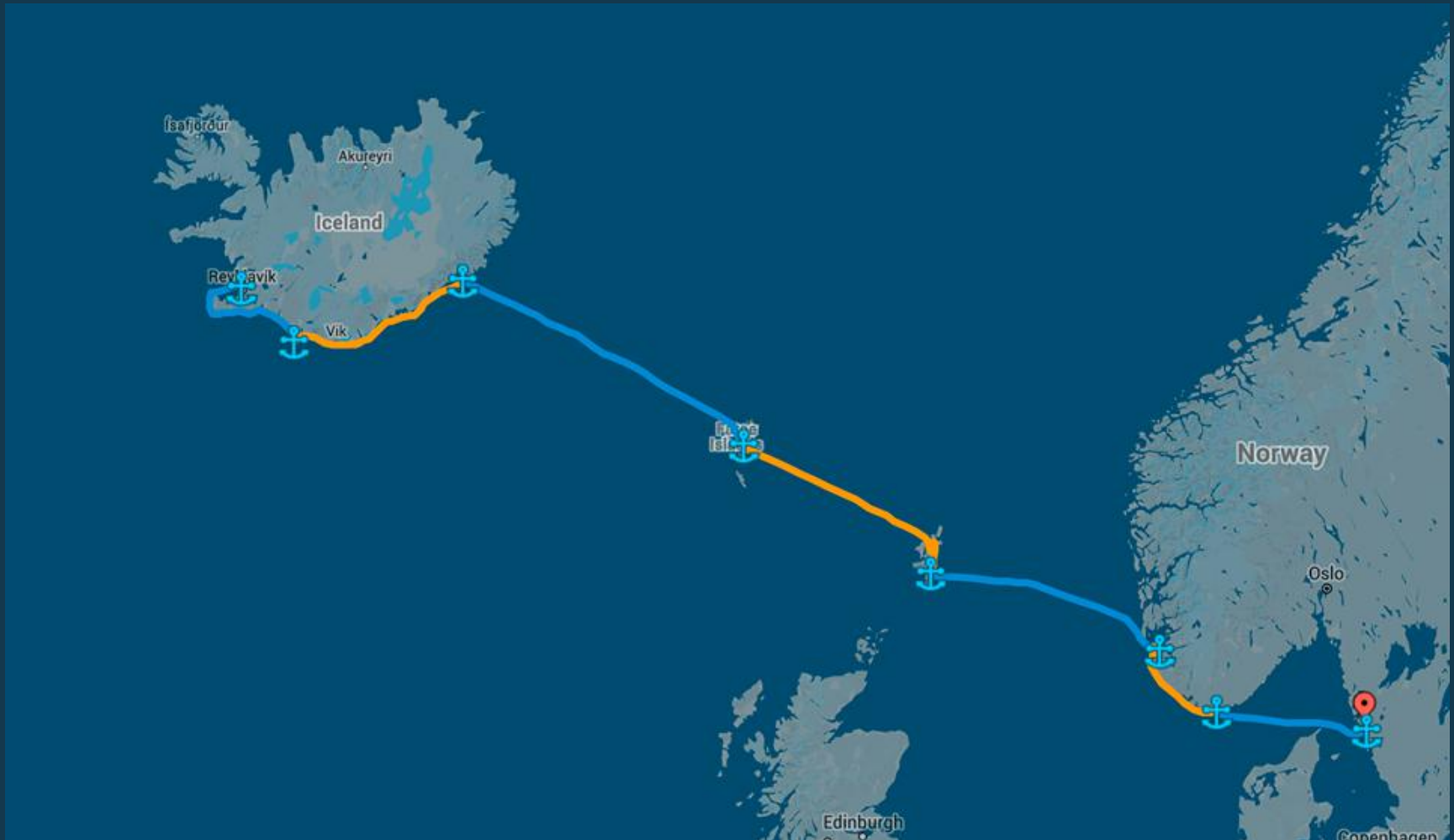




RAF NAR

A Challenging Voyage Start to Finish

- Ports of call -





RAFNAR
7748

www.rafnar.is



BS E27

DEKSERVICE



First leg

Reykjavik to the Westman Islands

- Wind, up to 18 m/s
- Seastate, variable up to sea state 4
- Distance travelled 146 NM.
- Time travelled, 4 hrs and 47 mins.
- Average speed 32,7 kts.
- Fuel consumption, average 93 L/hrs





Second leg Westman Islands to Höfn í Hornafirði

- Wind, up to 20 m/s
- Seastate, variable up to sea state 4
- Distance travelled 160 NM.
- Time travelled, 6 hrs and 30 mins.
- Average speed 25,4 kts.
- Fuel consumption, average 92 L/hrs





7.65k 32.2f
09:30 110f
L0.20 143f
39.8m
09:14
109f

4550
25.3
130.0
EVII

Heading Hold
155M

Third leg

Höfn í Hornafirði to Tórshavn

- Wind, up to 16 m/s
- Seastate, variable up to seastate 6
- Distance travelled 250 NM.
- Time travelled, 9 hrs and 2 mins.
- Average speed 27,1 kts.
- Fuel consumption, average 89 L/hrs





RAF NAR

Fourth leg Tórshavn to Lerwick

- Wind, up to 15 m/s
- Seastate, variable up to seastate 6
- Distance travelled 196 NM.
- Time travelled, 7 hrs and 8 mins.
- Average speed 24,3 kts.
- Fuel consumption, average 86 L/hrs





Fifth leg Lerwick to Stavanger

- Wind, up to 5 m/s
- Seastate, variable up to seastate 2
- Distance travelled 233 NM.
- Time travelled, 7:48hrs and x mins.
- Average speed 31 kts.
- Fuel consumption, average 94 L/hrs





Sixth leg Stavanger to Kristiansand

17:10 8th



6:50 9th



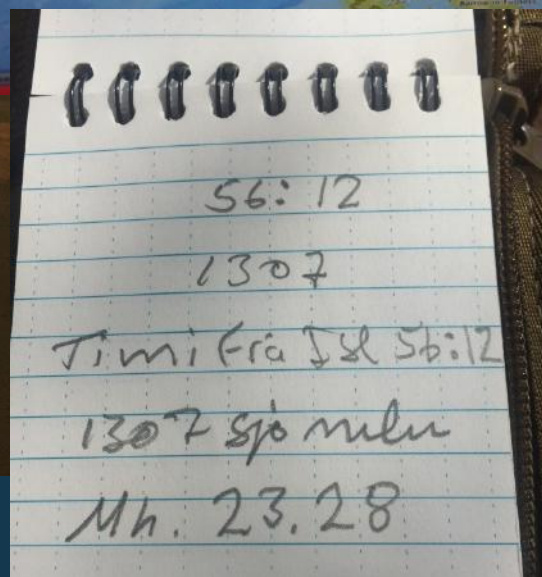
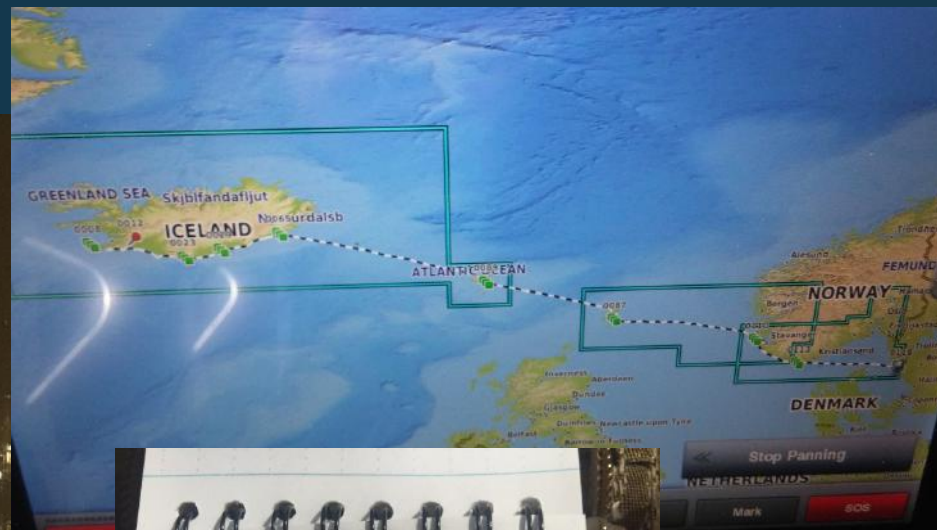
22:09 9th





Seventh leg Kristiansand to Gothenburg

02:18 10th

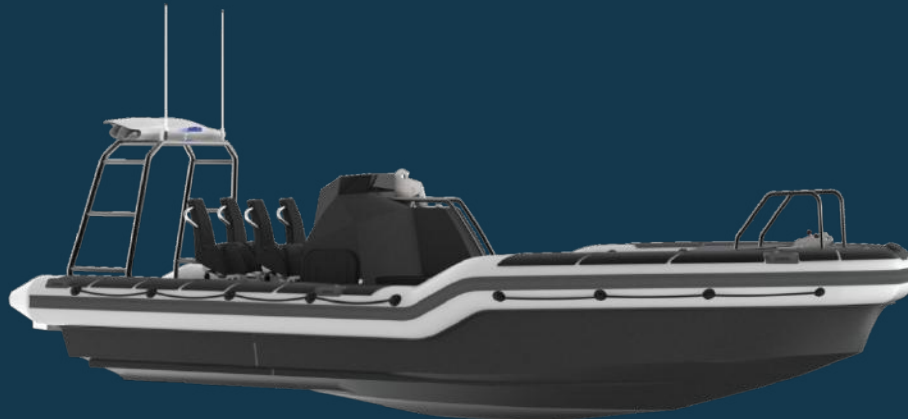


Flengur 850 Open RIB

Flengur RIB 850

Technical specification:

Lenght Overall	8,50m
Beam Max	3,00m
Draught	0,80 m
Displacement	3,2 tonnes (with 2 crew & 4 passangers)
Max Speed	30 kn
Cruising Speed	20 kn
Fuel Tanks	300 liters
Engine Type	Volvo Penta D6 (outboard optional)
Engine Size	230 HP
Propulsion	Waterjet (outboard optional)
Classification	Lloyds Registered Special Service Craft MED Module B





RAF NAR

Leiftur 1100 Cabin-RIB

Leiftur RIB 1100

Technical specification:

Lenght Overall	11.0 m
Beam Max	3.20m
Draught	0.55 m
Light Weight	3.8 tonnes*
Max Speed	40 kn
Crusing Speed	32 kn
Fuel Tanks	2x 300 liters
Engine Type	Yamaha
Engine Size	2x 250 HP
Classification	Lloyds Registered Special Service Craft

* This weight can vary according to actual setup and equipment on board





RAF NAR

Leiknir 1200 DayCruiser (with foam collar fendering)

Leiknir 1200

Technical specification:

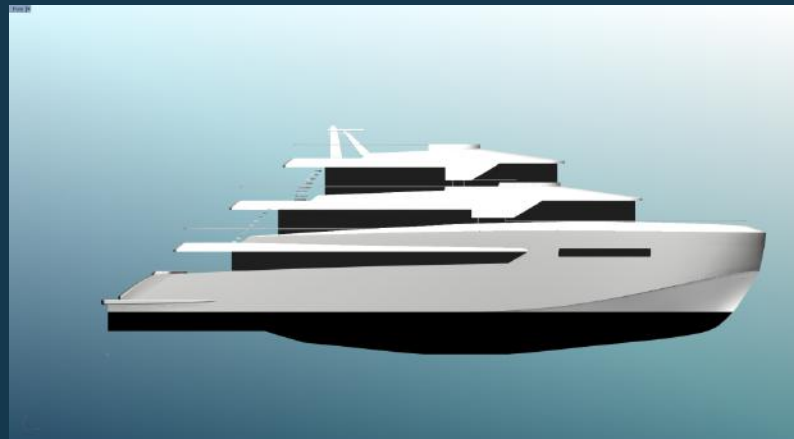
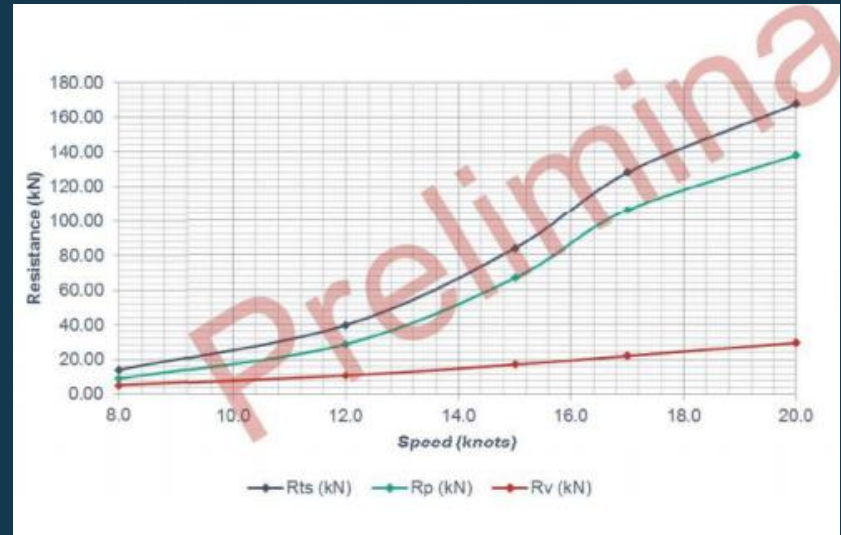
Lenght Overall	11.85 m
Beam Max	2.94 m
Draught	0.74 m
Light Weight	7.2 tonnes
Max Speed	35 kn
Fuel Tanks	2x 300 liters
Fresh Water Tank	100 liters
Engine Type	Volvo IPS600
Engine Size	2x 345 HP
Propulsion	IPS
Classification	Lloyds Registered





RAF NAR

Scalability - Is this hull technology formula a scalable concept?

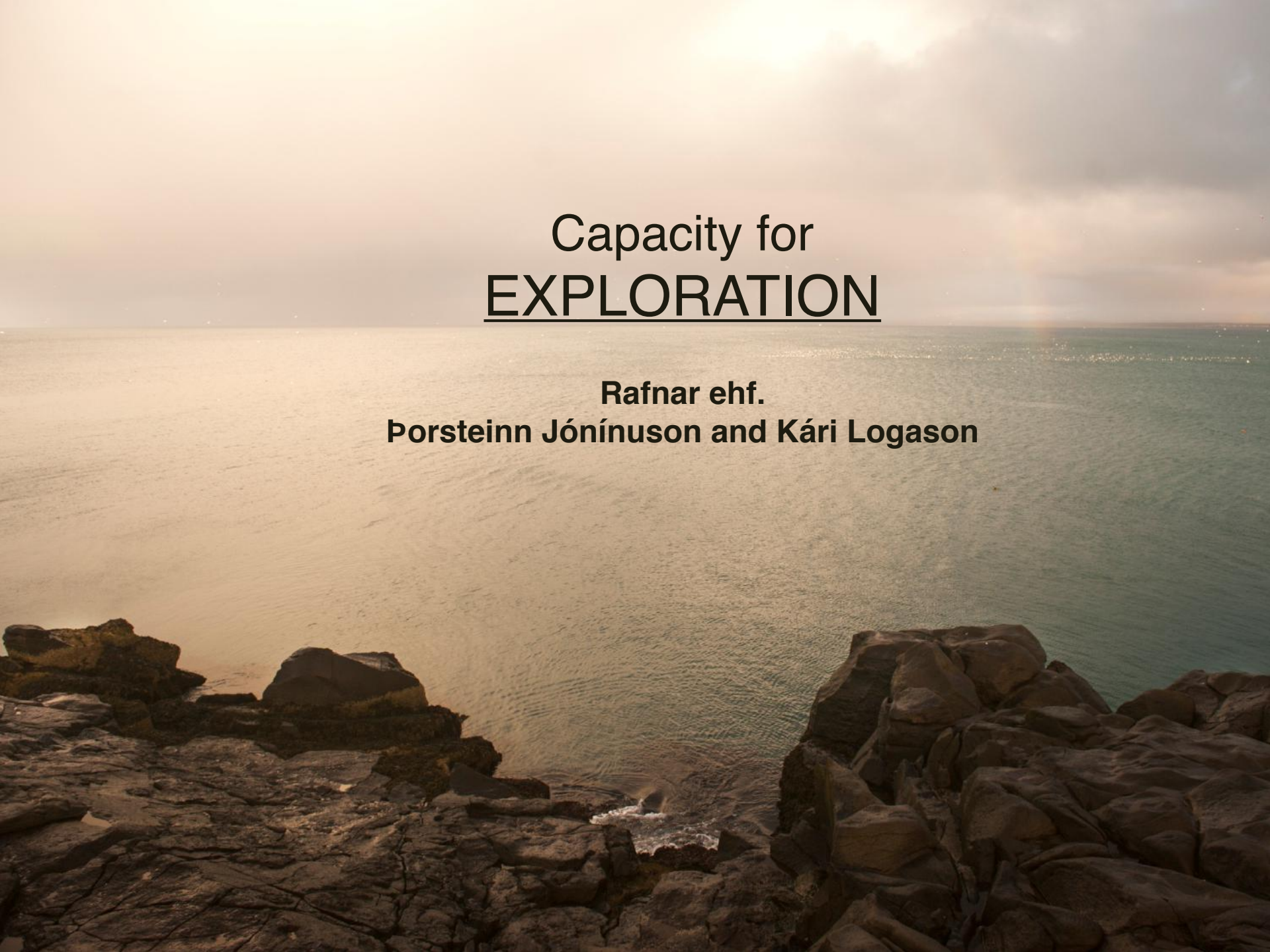




RAF NAR

CAPACITY FOR EXPLORATION

Life would be worth little without adventure



Capacity for EXPLORATION

**Rafnar ehf.
Þorsteinn Jónínuson and Kári Logason**



RAF NAR