

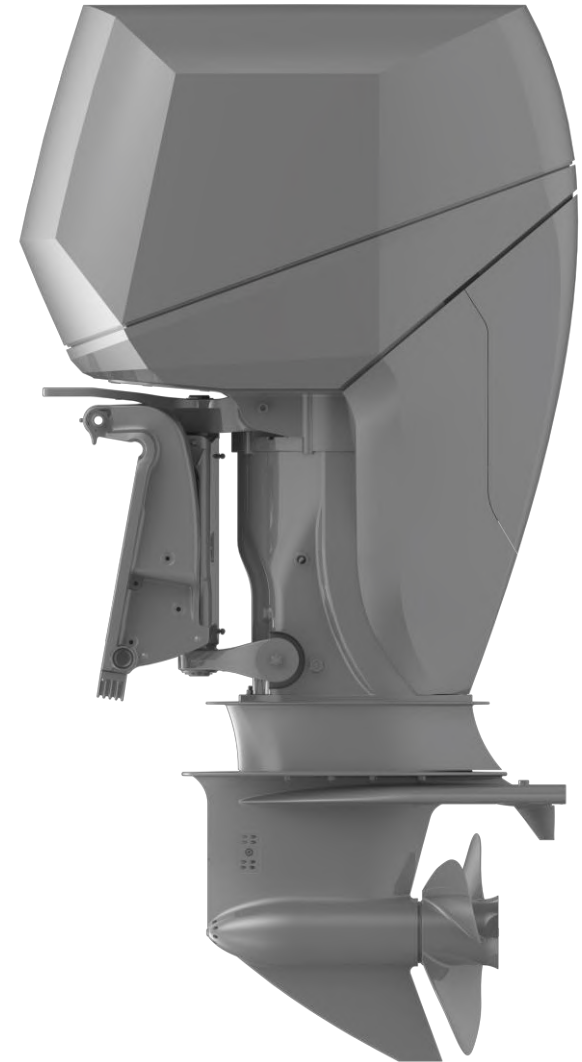


**Christer Flodman**

*Technical Manager*  
CIMCO Marine AB

# OXE DIESEL

- The OXE Diesel is the first high performance diesel outboard in the world.
- The ambition is to set new standards for durability, range, fuel-efficiency and emissions for outboard engines.



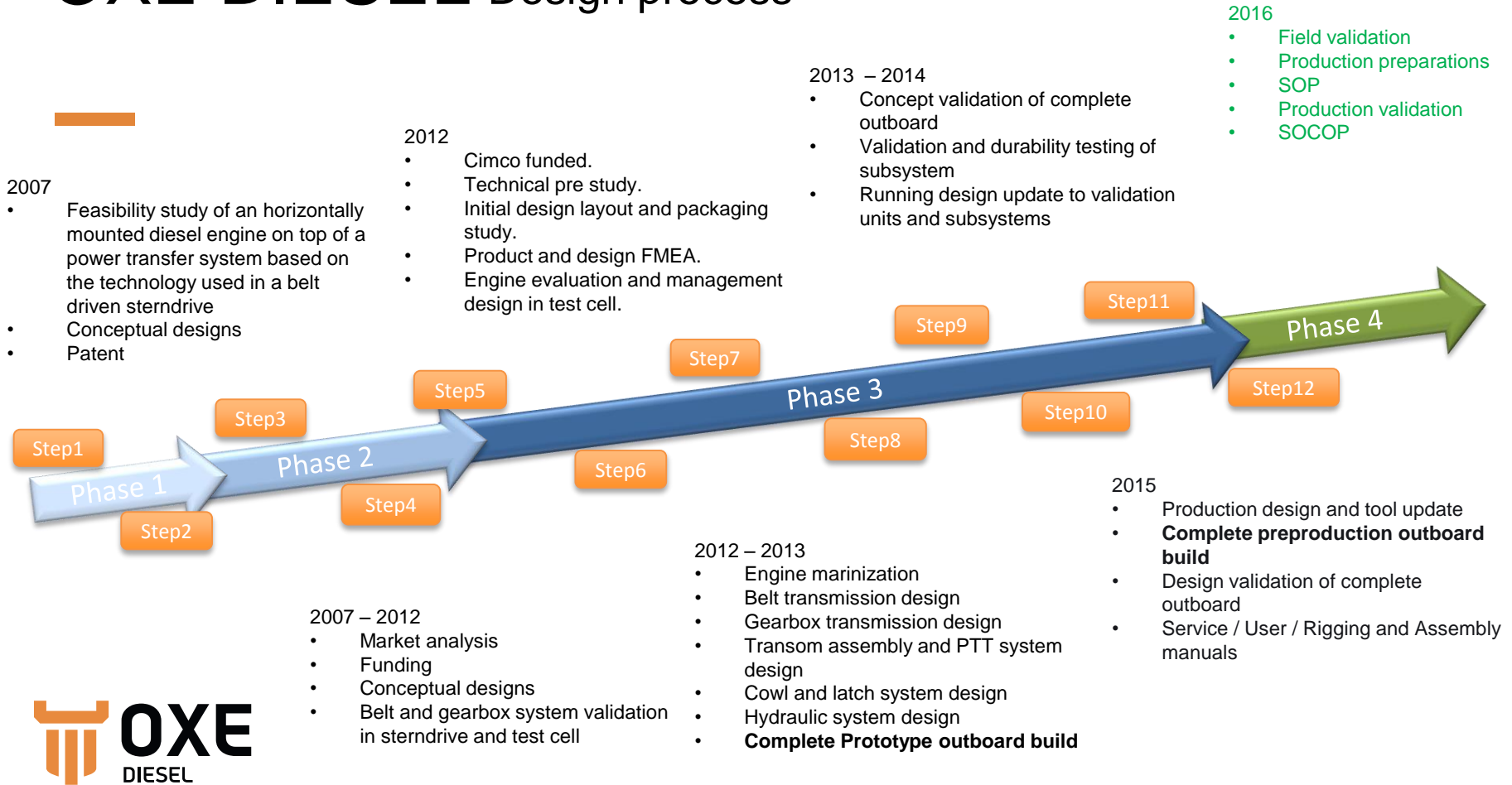
# OXE DIESEL

- The OXE Diesel is the first high performance diesel outboard in the world.
- The ambition is to set new standards for durability, range, fuel-efficiency and emissions for outboard engines.



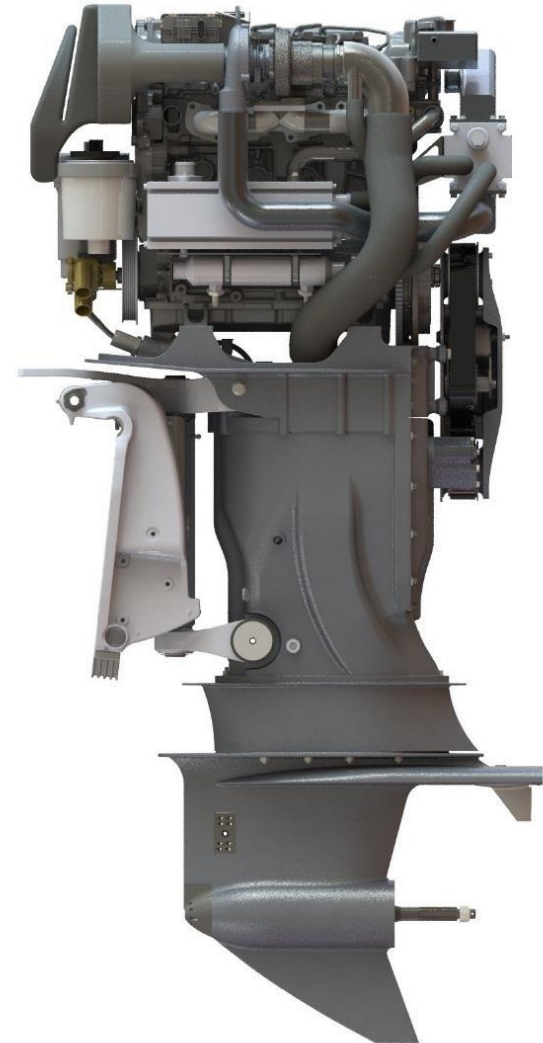


# OXE DIESEL Design process

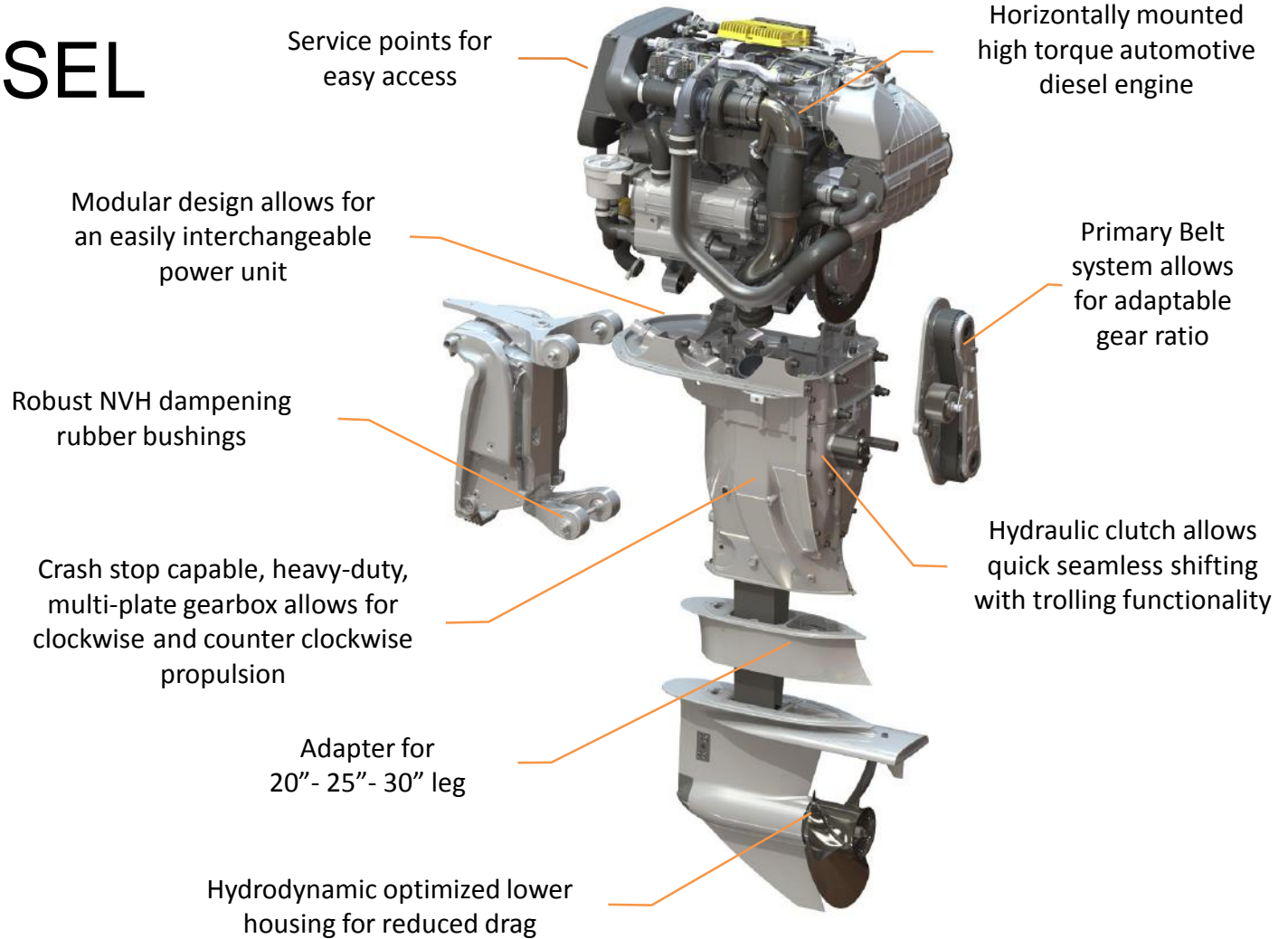


# OXE DIESEL Key Advantage

- Diesel
- Automotive (CI) diesel engine with a proven design.
- Low fuel consumption
- Low emissions (EPA, IMO, RCD)
- Closed cooling system with cabin heating possibility
- Commercial gearbox with electro hydraulic clutch and built in trolling.
- Patented high torque belt-transmission.
- Robust modular design



# OXE DIESEL



# OXE DIESEL

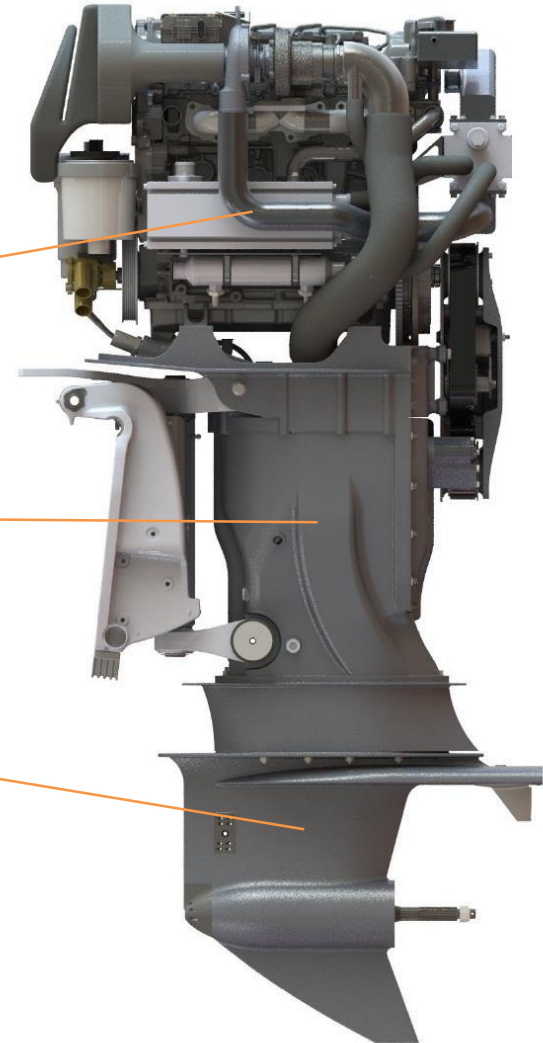


Modular

Automotive diesel engine

Gearbox

Belt Propulsion

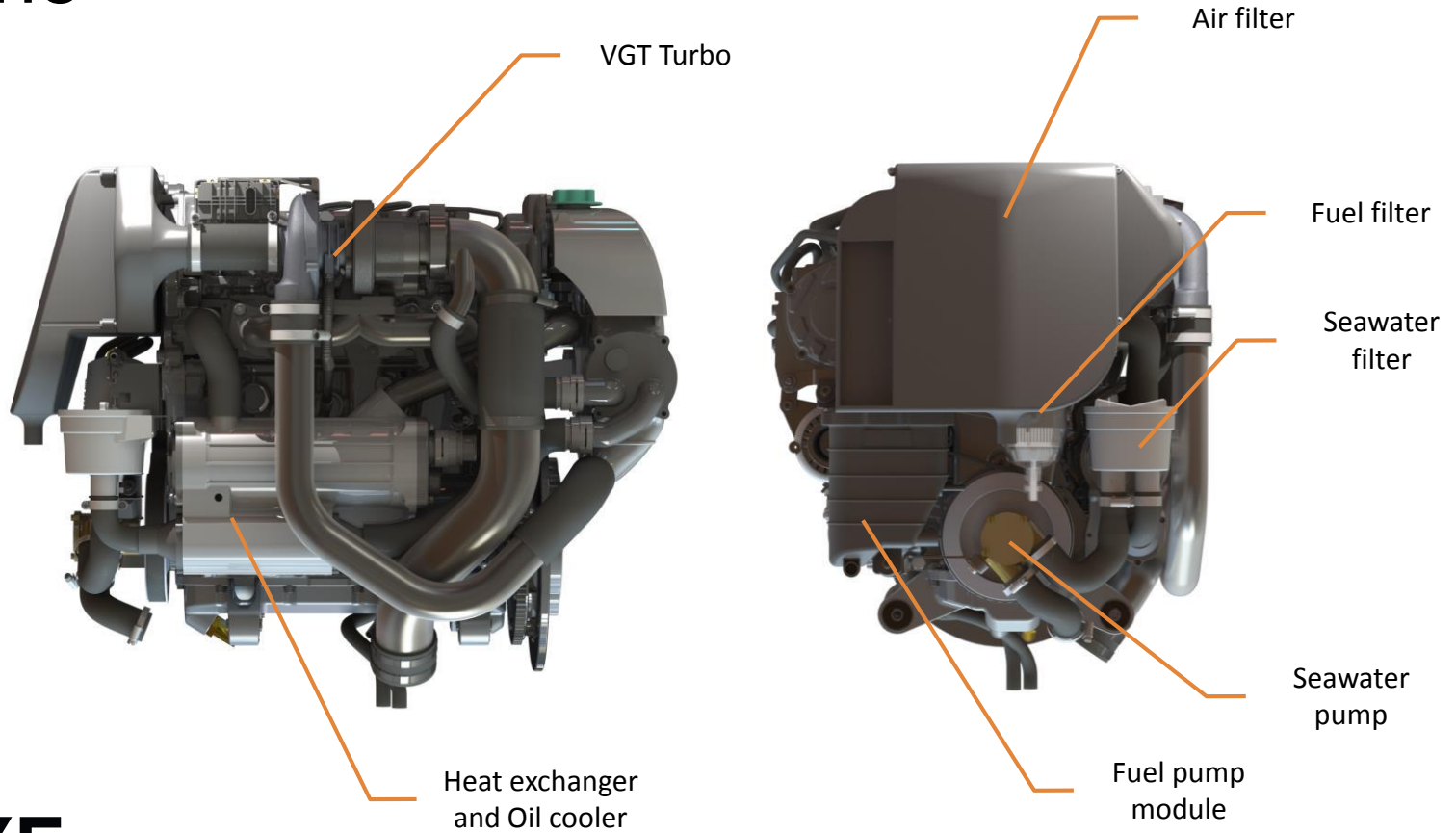


# Engine

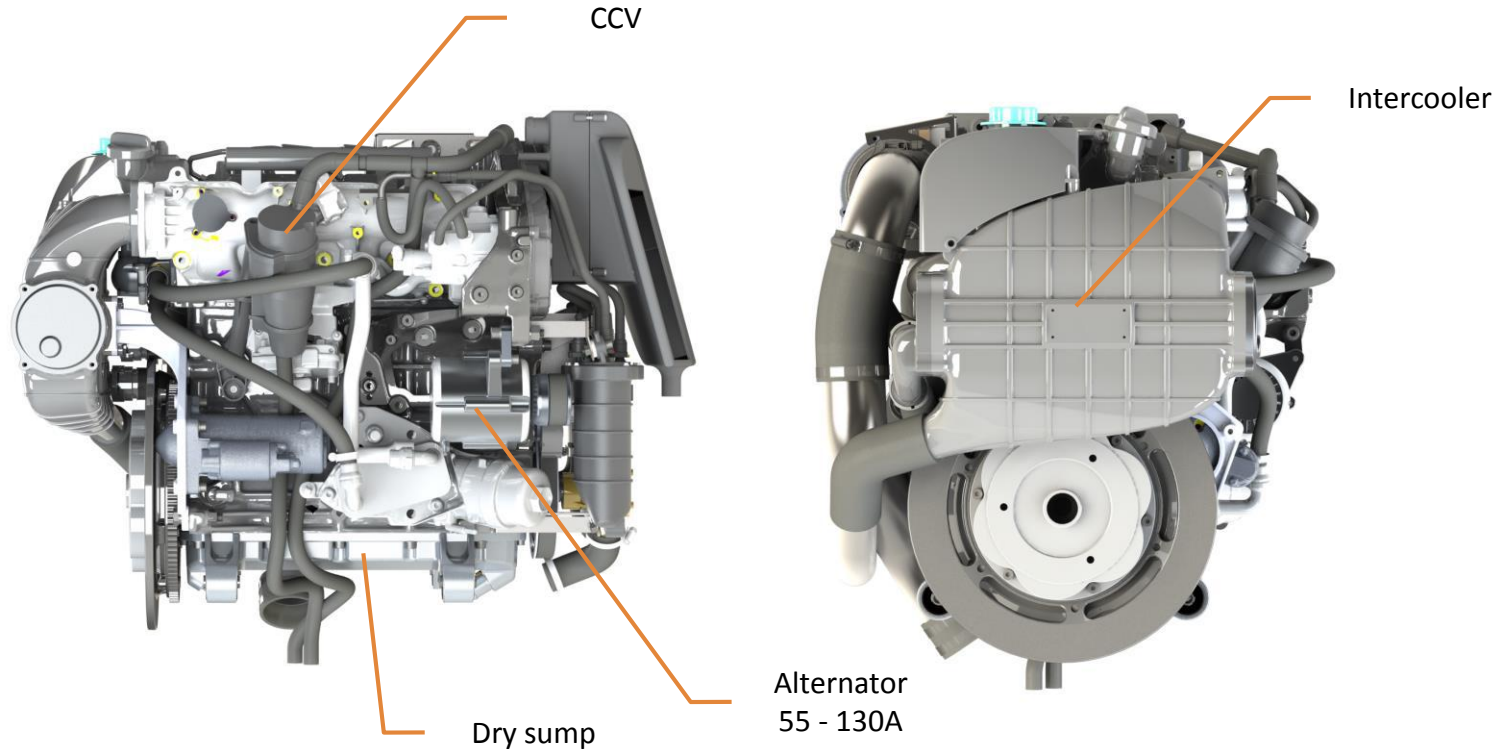




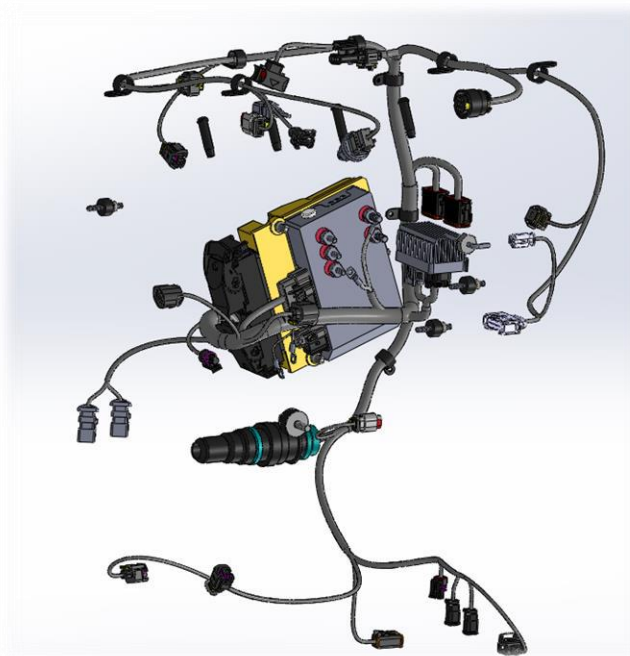
# Engine



# Engine



# Electronic Control



OXE EC	2015
System	Step 3
Engine	NIRA - ECU
Propulsion	NIRA
Display	CAN
Trim/Tilt	PSU - Electrical
Throttle	CAN
Shift	CAN
Diagnose	Engine, Propulsion & Helm
Steer by wire/Joystick	Yes
Multiple Engines	Yes
Dual helm station	Yes
Joystick docking	Yes
Autopilot	Yes

# OXE DIESEL

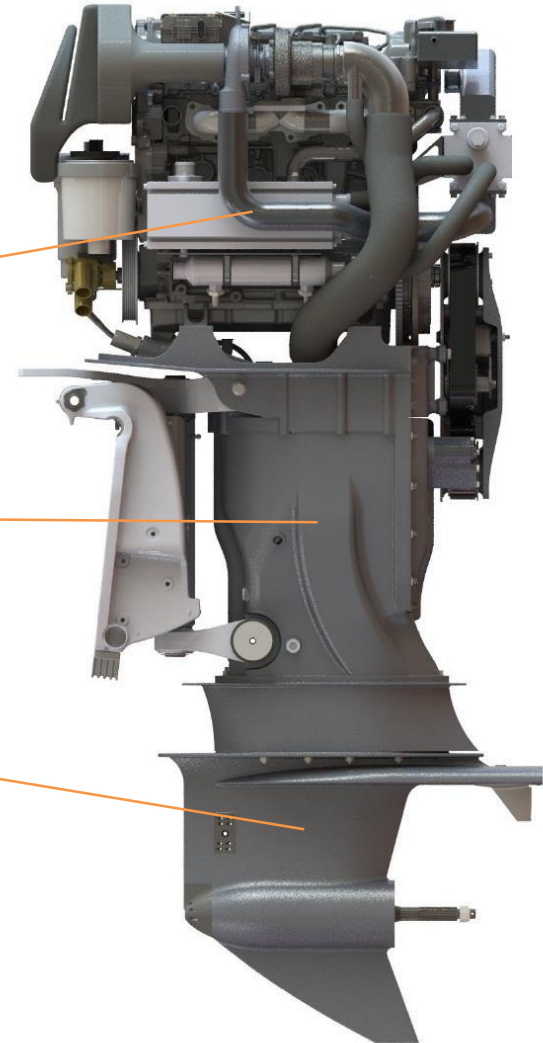


Modular

Automotive diesel engine

Gearbox

Belt Propulsion

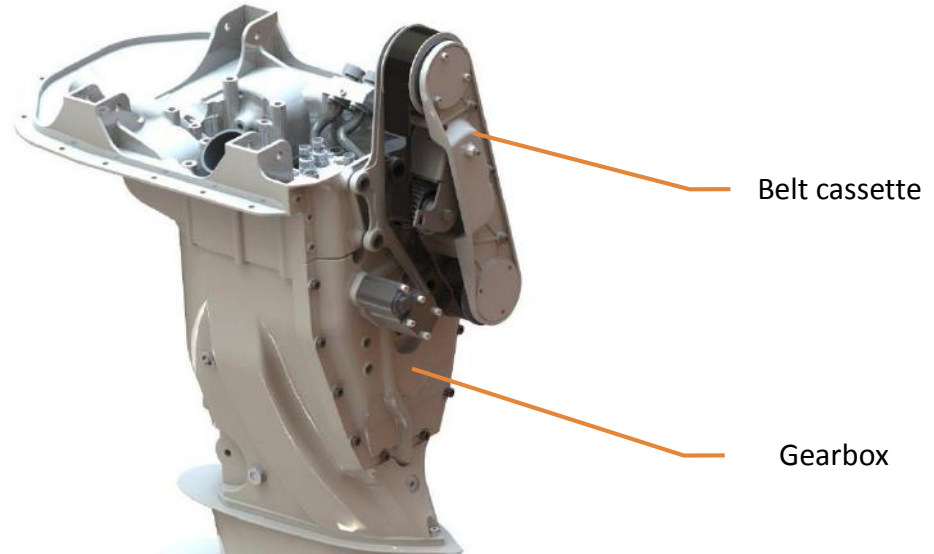


# Gearbox

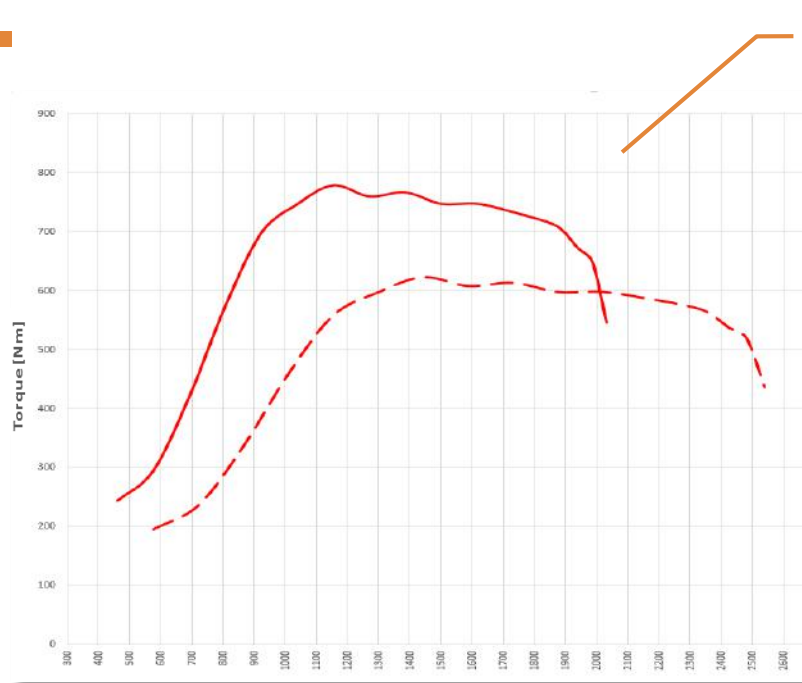




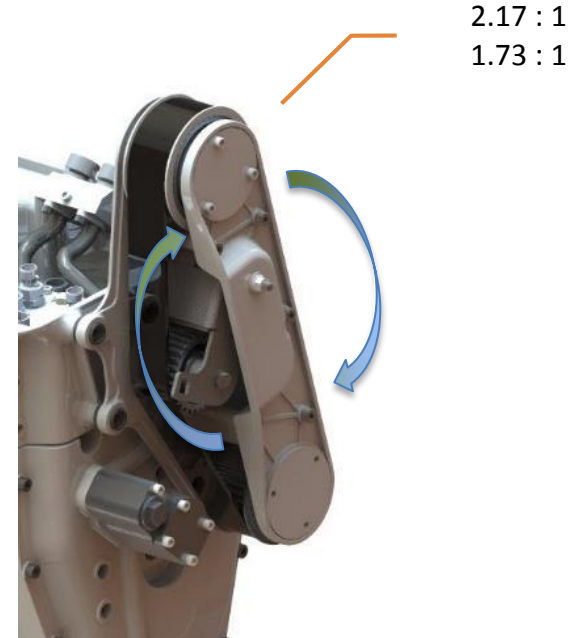
# Gearbox



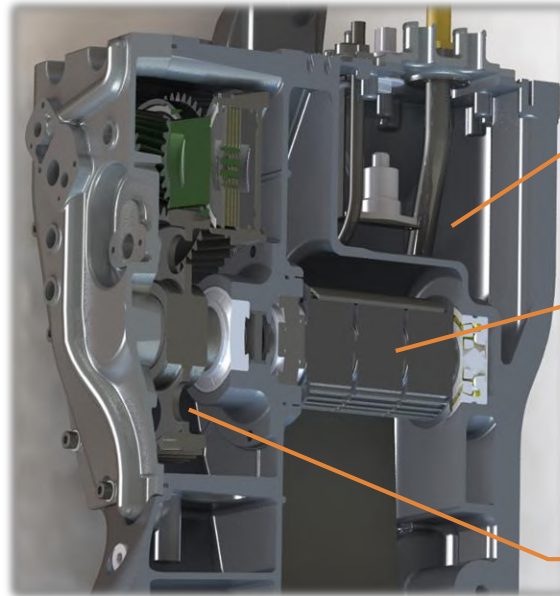
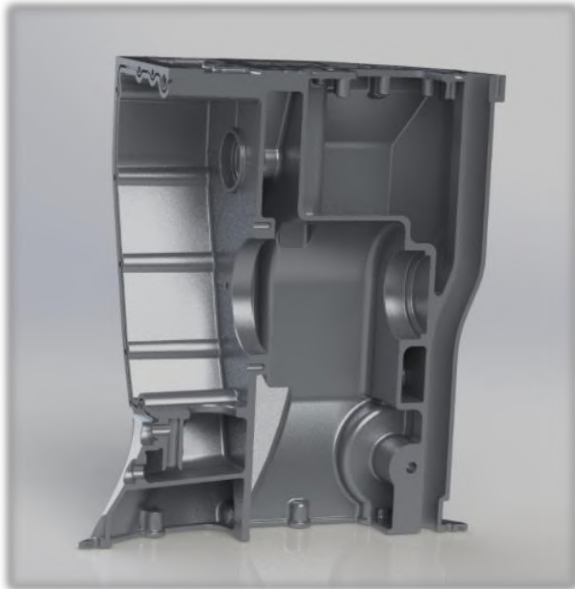
# Belt cassette



2.17 : 1  
1.73 : 1



# Gearbox



Engine oil

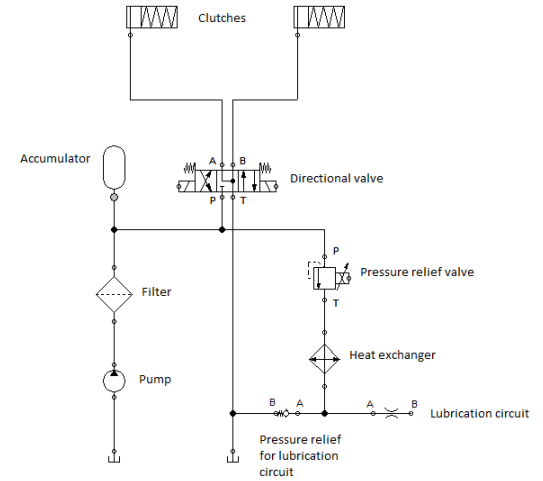
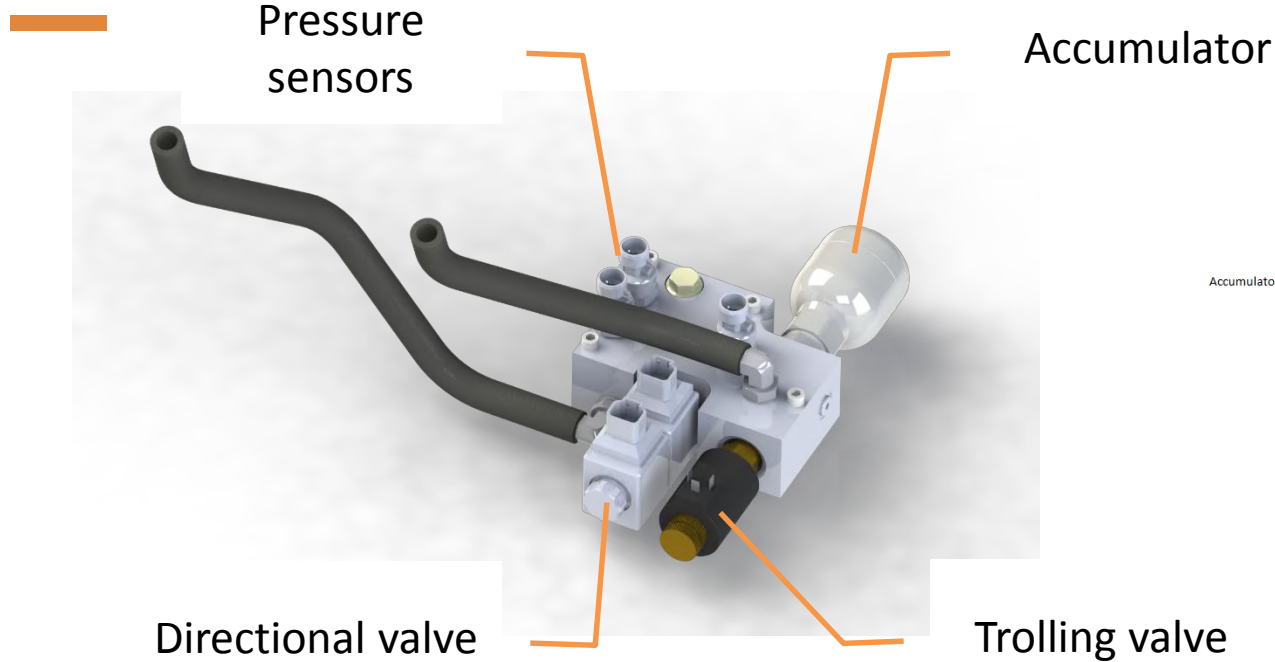
Belt

Gearbox

# Gearbox



# Gearbox Hydraulic





# OXE DIESEL

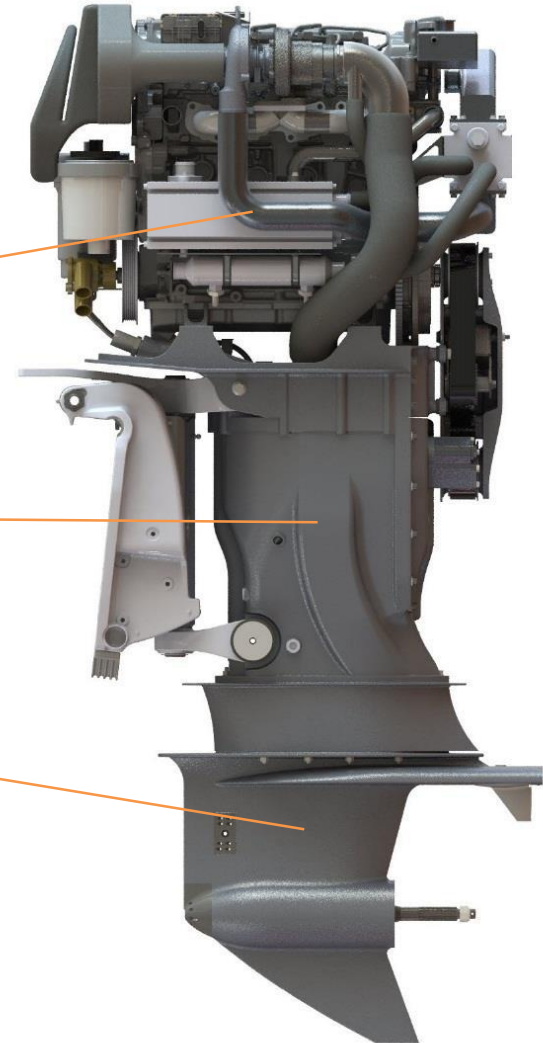


Modular

Automotive diesel engine

Gearbox

Belt Propulsion



# OXE DIESEL



Modular

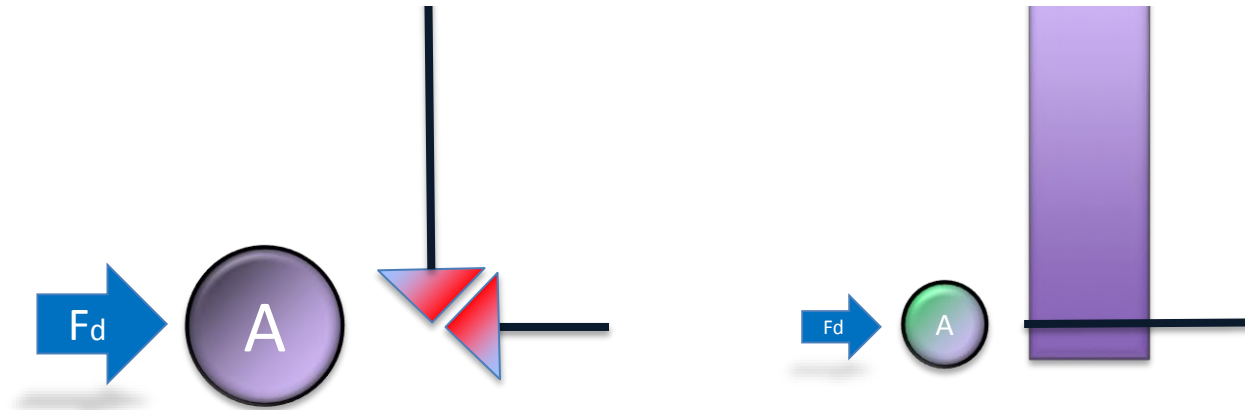
Automotive diesel engine

Gearbox

Belt Propulsion

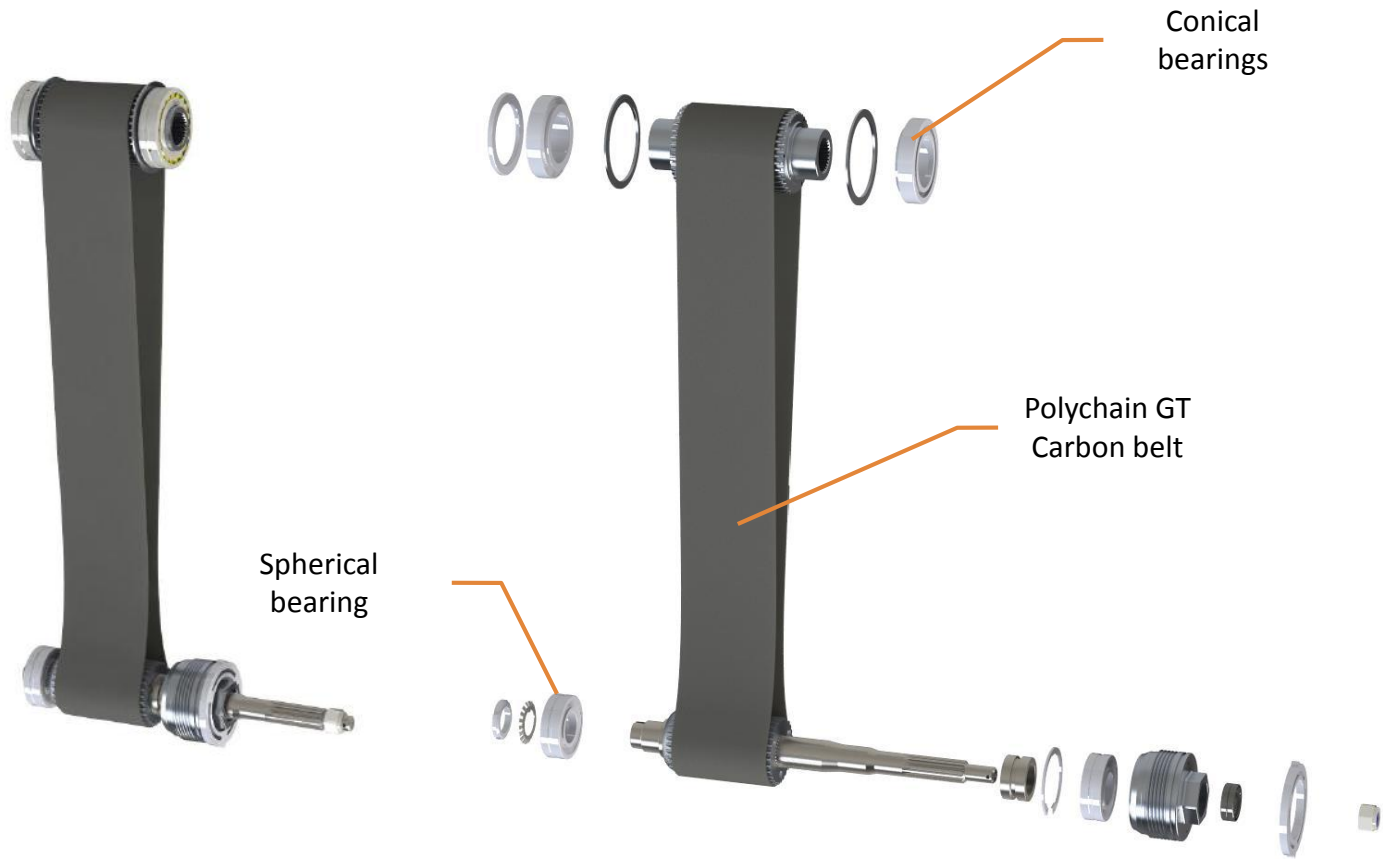


# Belt propulsion

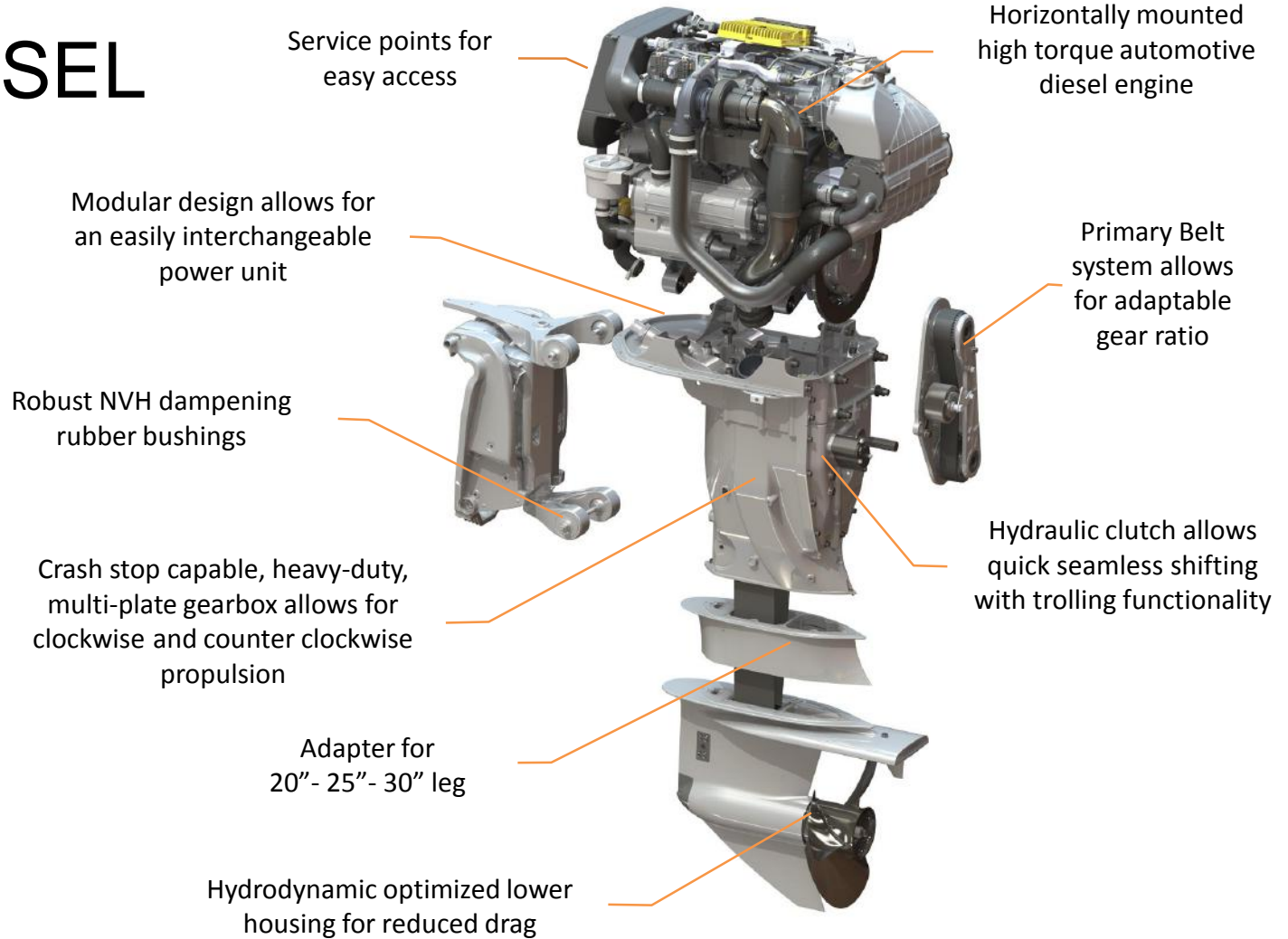


$$F_d = C_d \times A \times (\rho v^2 / 2)$$

# Belt propulsion



# OXE DIESEL





# OXE DIESEL





**Christer Flodman**

*Technical Manager*

CIMCO Marine AB