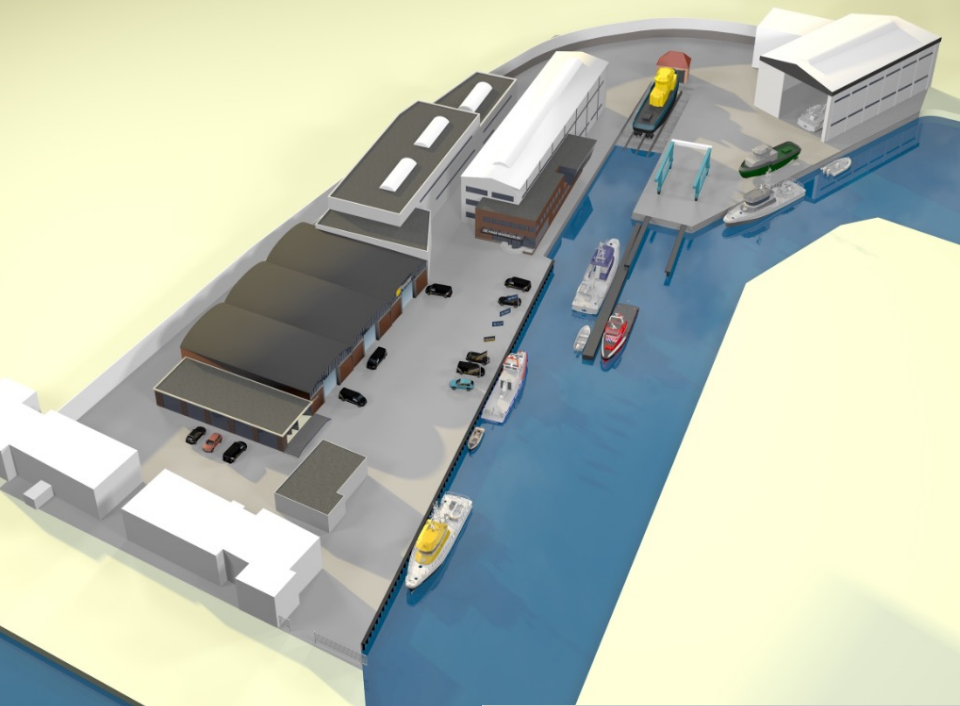


FIRST SHIPYARD ENTERING FROM SEA

INNOVATIVE SHIPBUILDING, MAINTENANCE
REPAIR AND SERVICE



INNOVATIVE SHIPBUILDING, MAINTENANCE REPAIR AND SERVICE



DE HAAS MASSLUIS BV

DE HAAS POWERPORT

FACILITIES

- 100 TONS MARINE TRAVELIFT
- LONG QUAYS
- FLOATING JETTY
- CONDITIONED HALLS

DIMENSIONS

TRAVELIFT

- MAX. LAST 100 TONS
- LENGTH 25 METER
- WIDTH 6,9 METER

SLIPWAY

- MAX. LOAD 750 TONS
- LENGTH 50 METER
- WIDTH 10 METER

SCHIP HALL 1

- DIMENSIONS 33 X 20 X 10,5 METER
- CRANES 4 X 3,2 TONS

SCHIP HALL 2

- DIMENSIONS 50 X 10 X 8,5 METER
- CRANES 3 X 2 TONS

DE HAAS ROTTERDAM BV

FACILITIES

- 820 TONS MARINE TRAVELIFT
- SHORE CRANE
- LONG QUAYS
- FLOATING JETTY
- CONDITIONED HALLS



TRAVELIFT

Voor schepen tot:

- 820 ton
- ca. 80 meter lengte
- ca. 14,5 meter breed

SCHEPSWERF

- Direct aan de Nieuwe Waterweg/Maas
- Basisvoorzieningen; koel- en bluswater, spanning, wifl
- 24/7 service bij calamiteiten
- 23.000 m²
- Ruimte om continue 12 schepen drag te zetten
- Mobile werkplaatsen
- Ruime parkeergelegenheid

GECONDITIEERDE SCHEEPSHAL

100 x 80 x 25 m. (l x b x h)

KRAAN

• Kraanfaciliteit, max 1400 kg @ 45m.

PONTOONS (11.725 m² eigen haven)

- Met loopbruggen
- 185 meter drijvende afmeervoorziening
- > 0,5 m diepgang

AFSPUITPLAATS

- "Zero gelation"
- Geschikt voor hydrojet waterstralen

KOLK

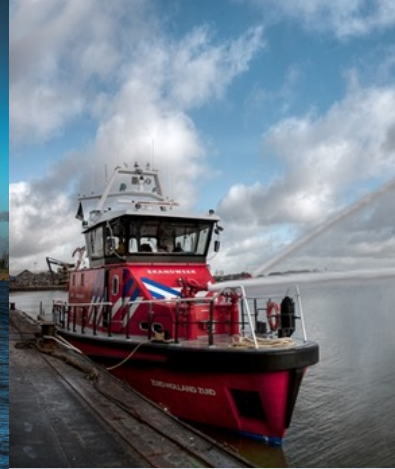
- 3.600 m² terrain
- > 8,5 meter diepgang

Eind 2021 is dit de scheepswerf van de toekomst. Passie, ervaring en vakmanschap van De Haas Maassluis worden opgeschaald waardoor het mogelijk wordt om alle soorten schepen tot ca. 80 meter lengte en 820 ton snel en flexibel droog te zetten. Klanten kunnen, exact op de manier zoals zij willen, gebruik maken van deze unieke faciliteiten voor onderhoud, reparatie en renovatie. Wij zijn er klaar voor!



PUBLIC SECTOR

- PORT OF ROTTERDAM
- SEA PORT POLICE
- MINISTRY OF WATERMANAGEMENT AND INSPECTION
- NATIONAL POLICE FORCE
- PILOTS AUTHORITY
- SAFETY ORGANISATIONS / SAR / FIRE DEPARTMENTS
- CUSTOMS
- COASTGUARD, FISHERY INSPECTIONS
- NAVY / DEFENCE

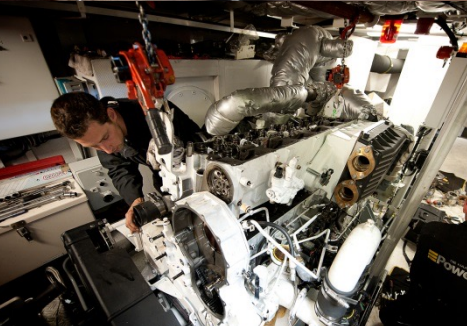


COMMERCIAL CLIENTS



MAINTENANCE & REPAIR

de Haas
MAASSLUIS



DE HAAS
PowerPort

From history...



Torget
Bouwnummer 127
Bouwjaar 1965



Miloslav
Bouwnummer 86
Bouwjaar 1949



Mari 5
Bouwnummer 96
Bouwjaar 1956



KW195
Bouwnummer 113
Bouwjaar 1961



Dutch Head
Bouwnummer 168
Bouwjaar 1975

through hybrid

de Haas
MAASSLUIS



TO AUTONOMOUS

de Haas
MAASSLUIS



and HIGH SPEED

Interceptor DHM100

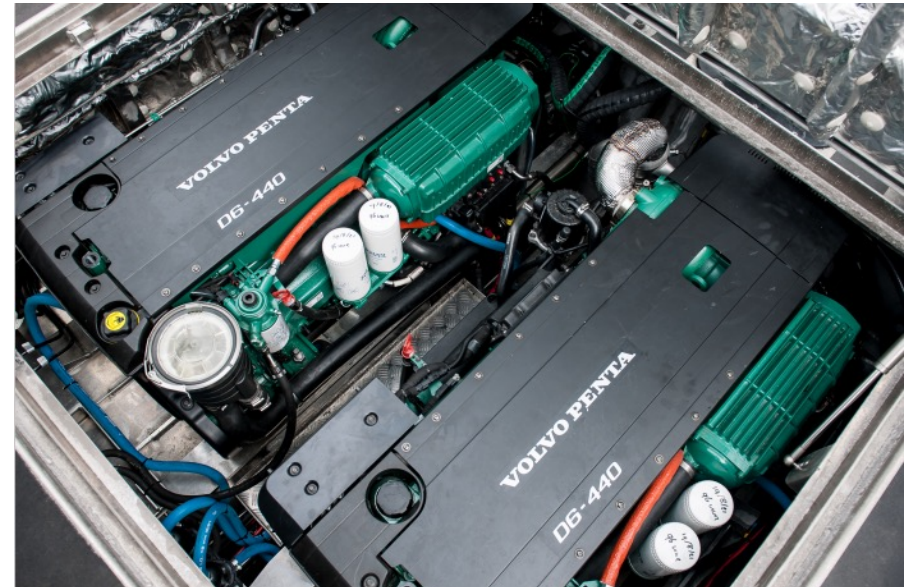
- MODULAIR DESIGN
- PROVEN DESIGN
- VALIDATED & CERTIFIED
- MULTI PURPOSE AND SAFE



Interceptor DHM1050

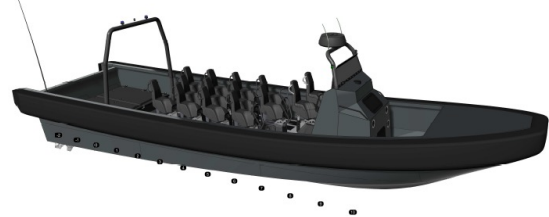
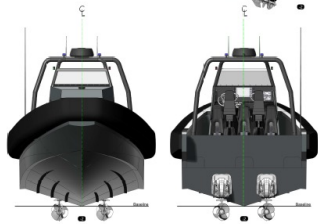
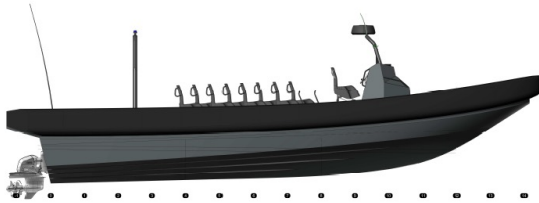
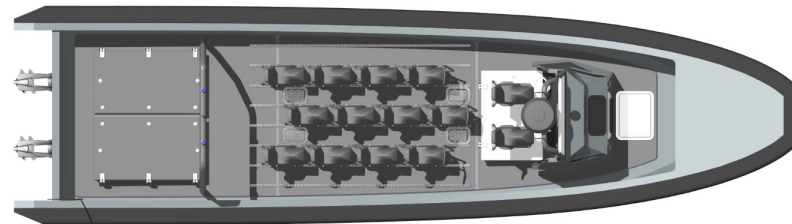
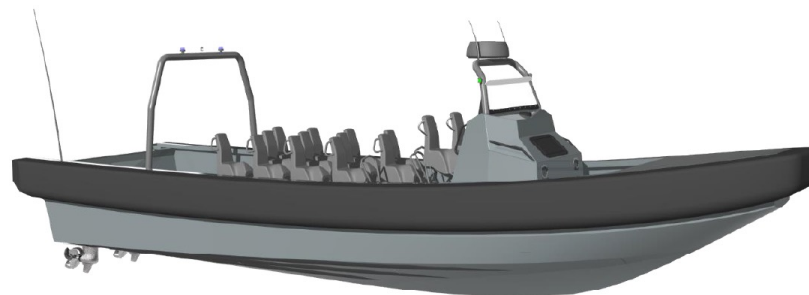
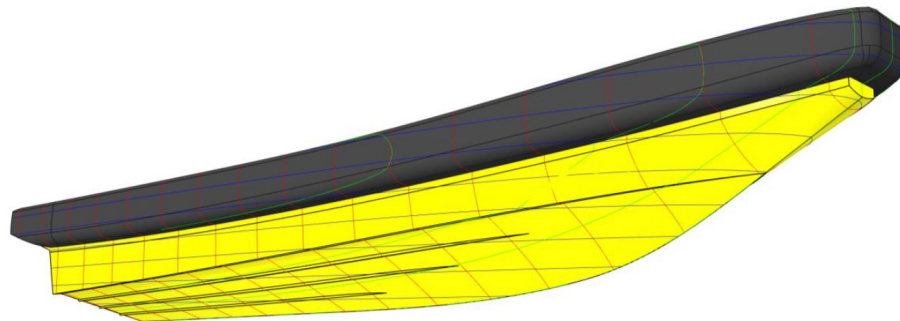
• TWIN VOLVO PENTA D6-440 DPI
"Customs"
50 KTS

• 2 CREW + 6 PAX



Interceptor DHM1200 FRISC

- IN CORPORATION WITH DUTCH KNOWLEDGE INSTITUTES
- PROTOTYPING
- LR GREY BOAT CODE
- LOW PHYSICAL IMPACT
- ADVANCED SENSOR SUITE
- MULTI-MISSION



PRELIMINARY

NO.	REV.	DATE	BY	CHKD.	DESCRIPTION

de Haas
 MAASSLUIS
 Govert van Vlietlaan 1 - Postbus 2 - 2144 ED - Rotterdam
 www.dehaas.nl
 Telefoon +31 20 59 15 11 - Fax +31 20 59 175 94

INTERCEPTOR 12m
 GENERAL ARRANGEMENT PLAN

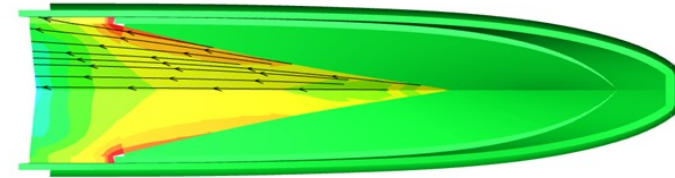
BASIS: TRANSFERREDE FRANK STAGING TITELS
 MAIN DIMENSIONS
 Length overall 12.0 m
 Length between 10.0 m
 Beam overall 2.50 m
 Beam between 2.00 m
 Draught 0.50 m
 Draught at bow 0.50 m
 Draught at stern 0.50 m
 Draught at mid 0.50 m
 Draught at deck 0.50 m
 Draught at hull 0.50 m
 Draught at keel 0.50 m
 Draught at bottom 0.50 m
 Draught at side 0.50 m
 Draught at transom 0.50 m
 Draught at bow 0.50 m
 Draught at stern 0.50 m
 Draught at mid 0.50 m
 Draught at deck 0.50 m
 Draught at hull 0.50 m
 Draught at keel 0.50 m
 Draught at bottom 0.50 m
 Draught at side 0.50 m
 Draught at transom 0.50 m

Interceptor DHM1200 Custom

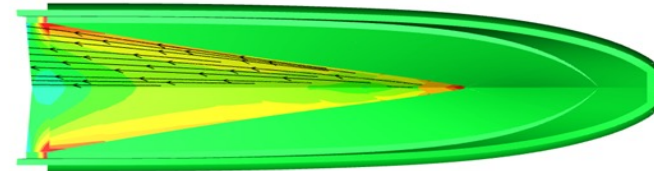
- KMAR
- FRONTEX
- KUSTWACHT
- ISR
- SAR
- 45+ KTS @ FULL LOAD
- GYRO GESTABILISED
- HIGH PAYLOAD CAPACITY
- LOW ILS COSTS

MARIN

de Haas
MAASSLUIS

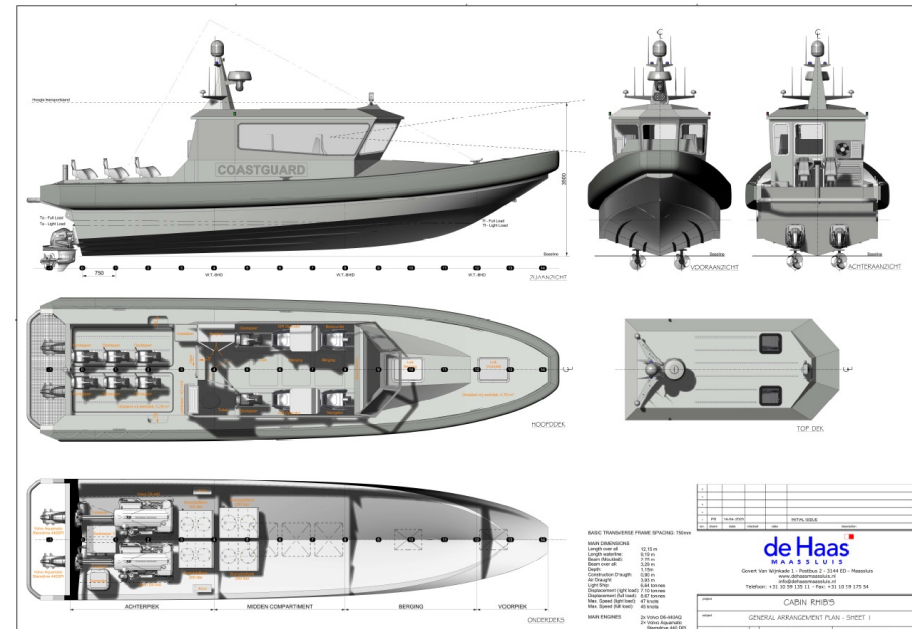


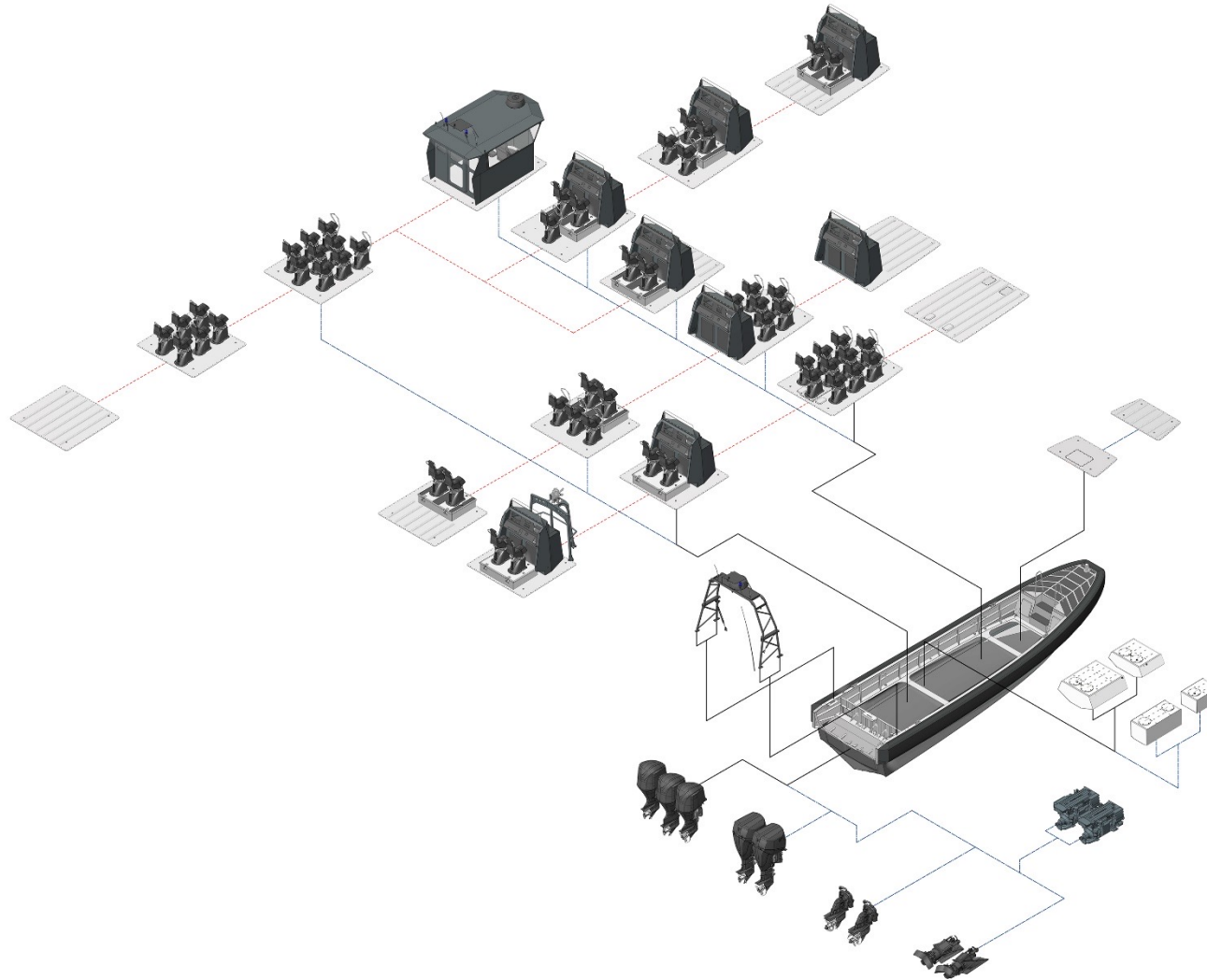
$V_s = 30$ kn



$V_s = 50$ kn

Streamlines along the wetted part of the hull for the vessel sailing at 30 kn and 50 kn in the light load condition.





Modulair Design

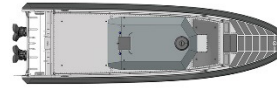
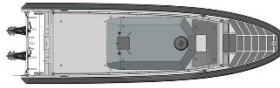
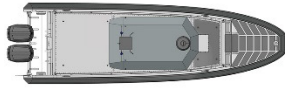


Petrol outboard engines

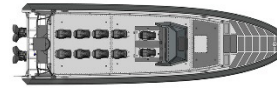
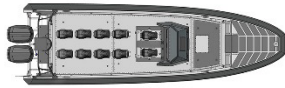
Diesel outboard engines

Inboard engines
with Sterndrive

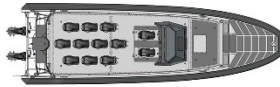
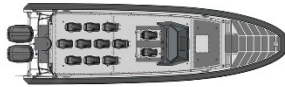
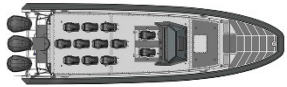
Inboard engines
with Waterjet



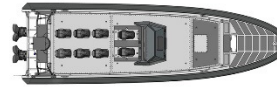
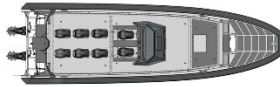
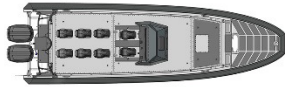
Cabin type



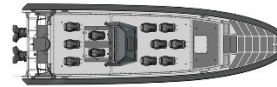
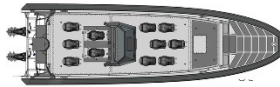
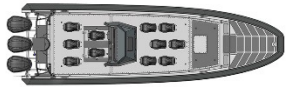
Forward operated
8 pax
400kg payload



Forward operated
10 pax
200kg payload



Midship operated
6 pax
600kg payload



Midship operated
9 pax
300kg payload



Aft operated
10 pax
200kg payload
Single point lifting



Aft operated
10 pax
200kg payload

Modulair Design



QUESTIONS?

de Haas
MAASSLUIS

