



THE BORDER AND COAST GUARD UNIT OF THE PORTUGUESE GENDARMERIE

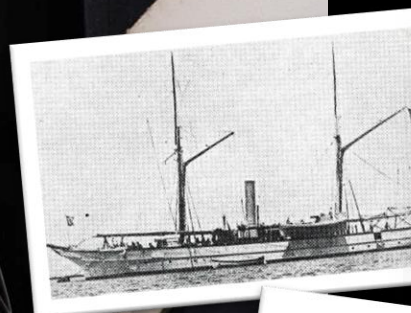
Major-general Jorge Bolas





GNR

Who we are



REGULAMENTO ORGANICO DO CORPO DA GUARDA FISCAL

CAPITULO I

Constituição e composição do corpo

Artigo 1.º A força actualmente empregada no serviço da fiscalização externa das alfândegas, conforme a organização aprovada pelos decretos de 1 de setembro de 1881, 30 de novembro de 1882 e 23 de outubro de 1883, passará a constituir um corpo especial da força pública, que se denominará corpo da guarda fiscal, destinado privativamente ao serviço da fiscalização, terrestre e marítima, dos estabelecimentos públicos, cuja administração, como está confiada à administração geral, não implique obrigações indirectas.



1886

Created the Coastal Inspection Fleet

1910/11

The Republic and the Portuguese Gendarmerie

1993

Extinction of Fiscal/Customs Police

2009

Created the Coastal Unit

2021

Become a Border and Coast Unit





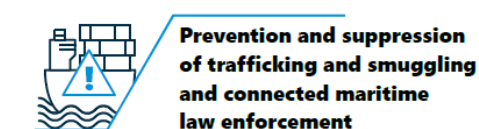
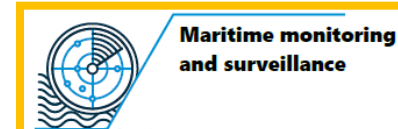
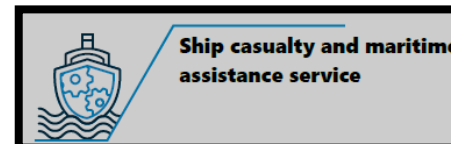
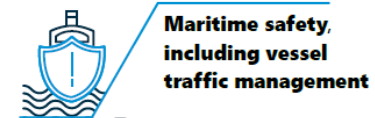
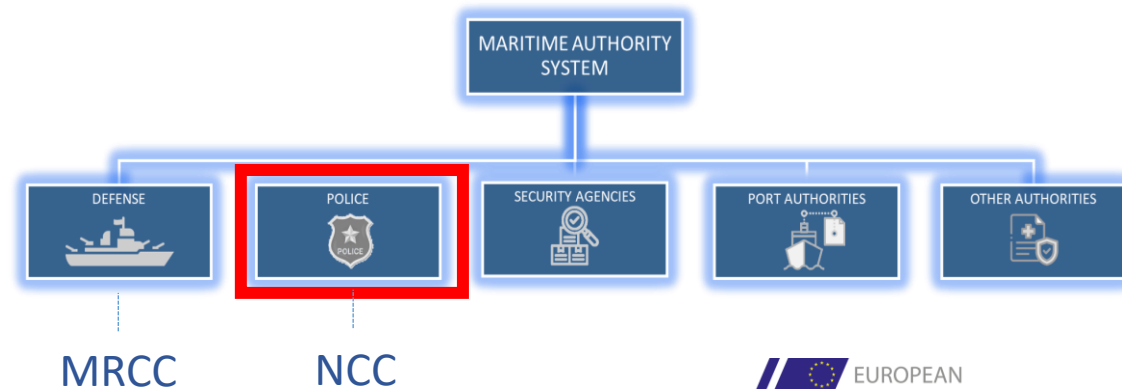
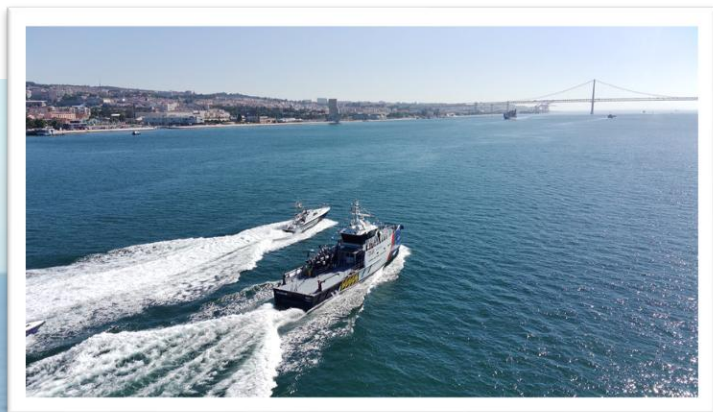
PORTUGAL RESPONSABILITIES IN MARITIME DOMAIN



- 5.8M Km² responsibility area
- 7^o biggest country in the world
- Biggest SAR area in Europe
- 2nd biggest in the north atlantic
- 63x Portugal
- 11x France
- 16x Germany
- 24x UK

A BORDER & COAST GUARD UNIT

ALIGNMENT WITH THE EUROPEAN MODEL



THREATS AND RISKS

MAIN CRIMINAL CHALLENGES

“ (...) is responsible for the general Gendarmerie mission, with specific competences in the surveillance, control and inspection of the maritime and land borders. ”



OUR CONCEPT OF OPERATIONS

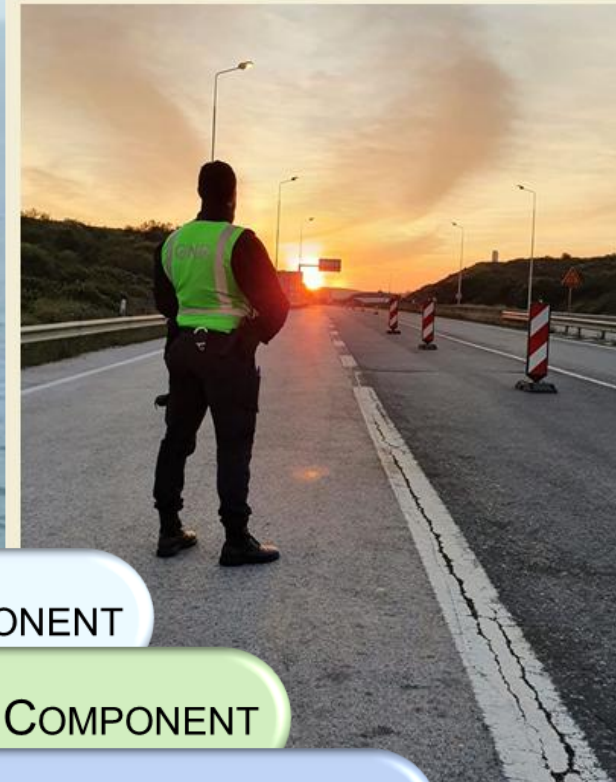
A GLOBAL MODEL



COAST GUARD DIMENTION



BORDER GUARD DIMENTION



AIR COMPONENT



LAND COMPONENT



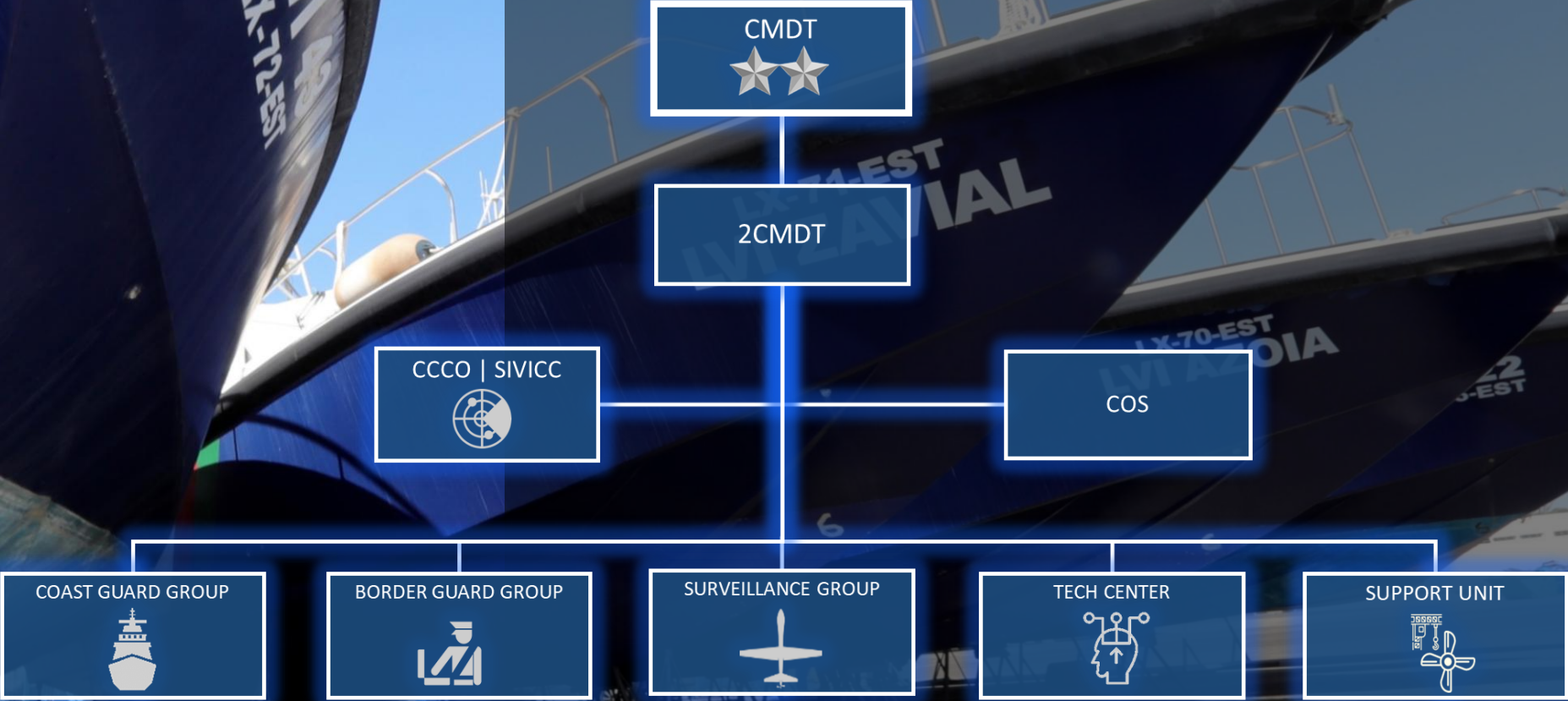
MARITIME COMPONENT



SPECIALIZED COMPONENT

UCCF | HOW WE ARE ORGANIZED

THE DISPOSAL





CRIMINAL CHALLENGES

ILLEGAL MIGRATION & SUPPORTING FRONTEX

≥1000 



 2020 - 2025

 POLÓNIA
 FRONTEX HEADQUARTERS

SLOVAKIA

LATVIA

ROMENIA

LITUANIA

 MONTENEGRO

 JO OPERATIONS

 ITÁLIA

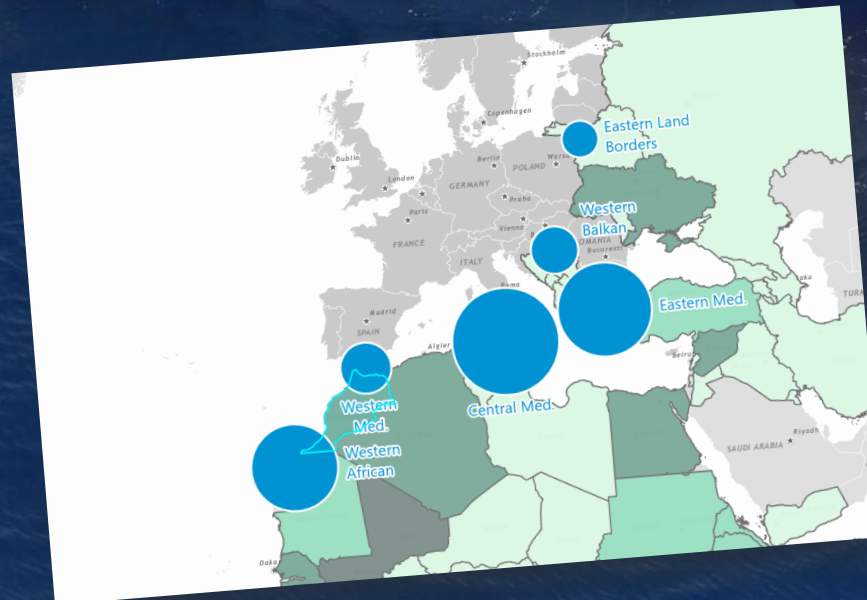
 FRONTEX JO THEMIS

 GRÉCIA

 FRONTEX JO POSEIDON

 SPAIN

 JO OPERATIONS



Country of origin: **Morocco**

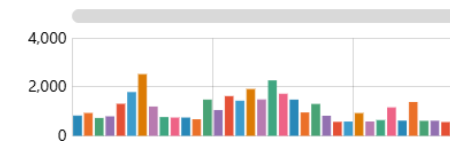
Total number of detections in 2025 (Mar) is **1 333**

Top 3 migratory routes:

Western African Route : **557**

Western African Route : **557**

Western Mediterranean Route : **457**



Graph: Each bar represents monthly data. Roll over it to see figures

HOW WE PROTECT OUR MARITIME BORDER

AN HOLISTIC MODEL



Sensors

HD | IR | NV | Radar

Response

Land, maritime and aerial

Intelligence

HUMINT | IMINT | SIGINT

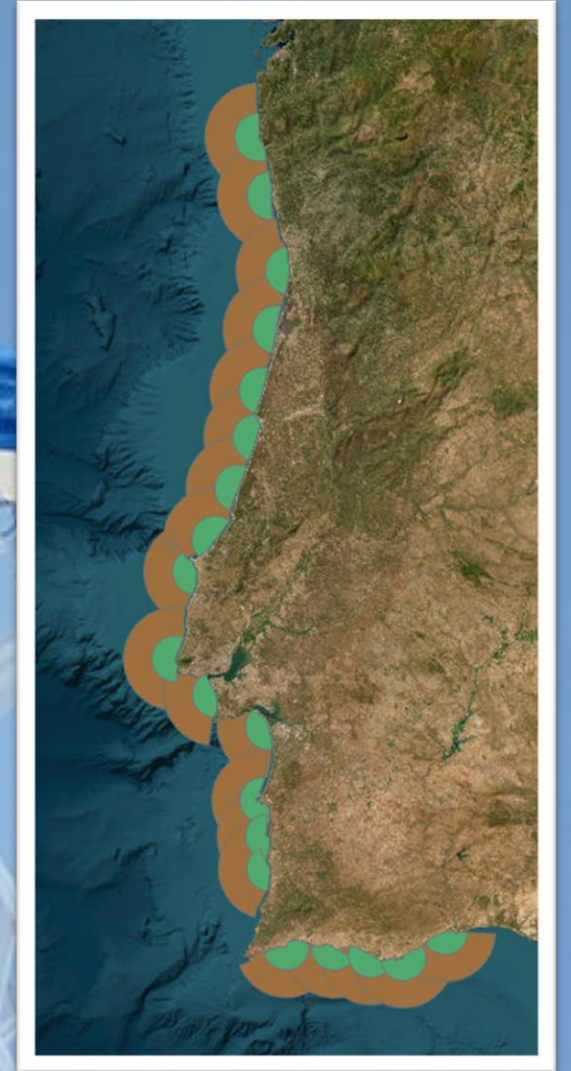
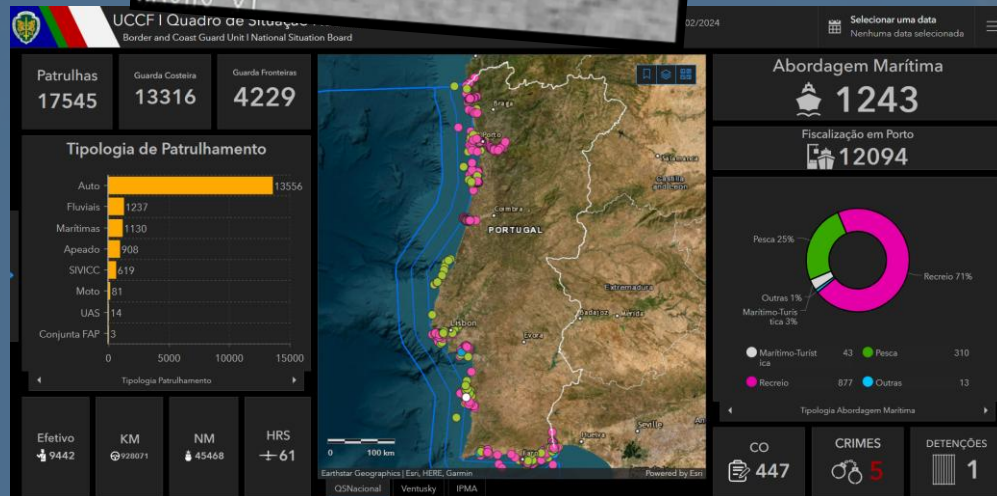
COASTLINE | C² SURVEILLANCE INTEGRATED SYSTEM

THE NATIONAL INSTRUMENT OF THE MARITIME BORDER SURVEILLANCE



66 -0.81

ANCAO VT



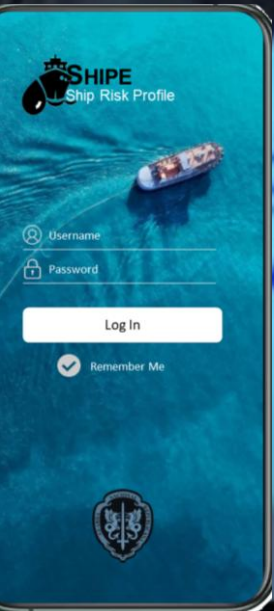
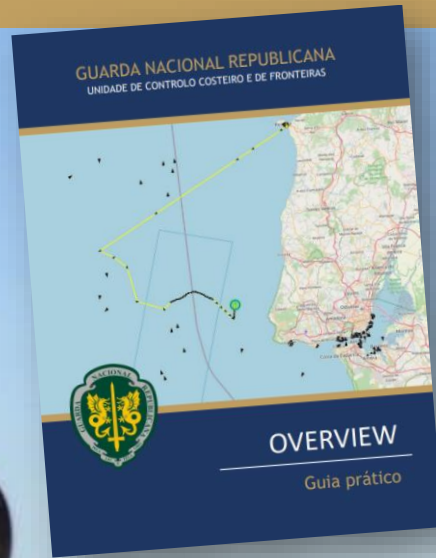


14:50 22
4 4



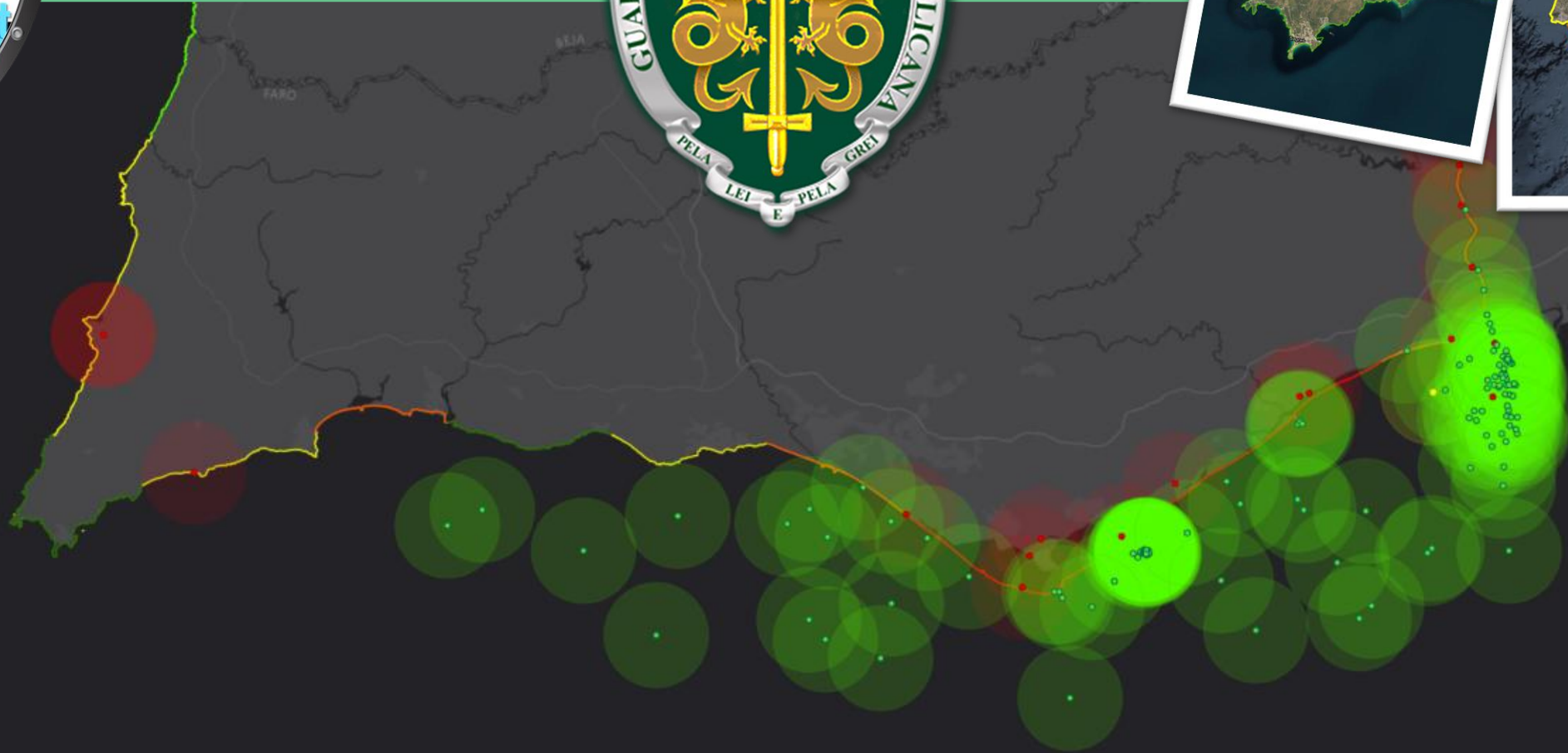
UCCF| SITUATION AWARENESS

OUR INTELLIGENCE MODEL



INTELLIGENCE INSTRUMENTS

A PREDICTABLE TOOL



COAST GUARD GROUP HSB

THE MARITIME RESPONSE MODEL



Tactical boarding RIBs (VBSS Ops)



Interceptors (Protect & support)

TACTICAL COMPROMISE

BETWEEN THE NEEDS & THE EXPECTATIONS



TACTICAL COMPROMISE

TECHNICAL REQUIREMENTS



Vs



Vs



Vs





ENVIROMENTAL COMMITMENT

A LEGAL AND MORAL RESPONSABILITY

MARITIME DECARBONIZATION

HSB & GREEN ENERGY



Vs



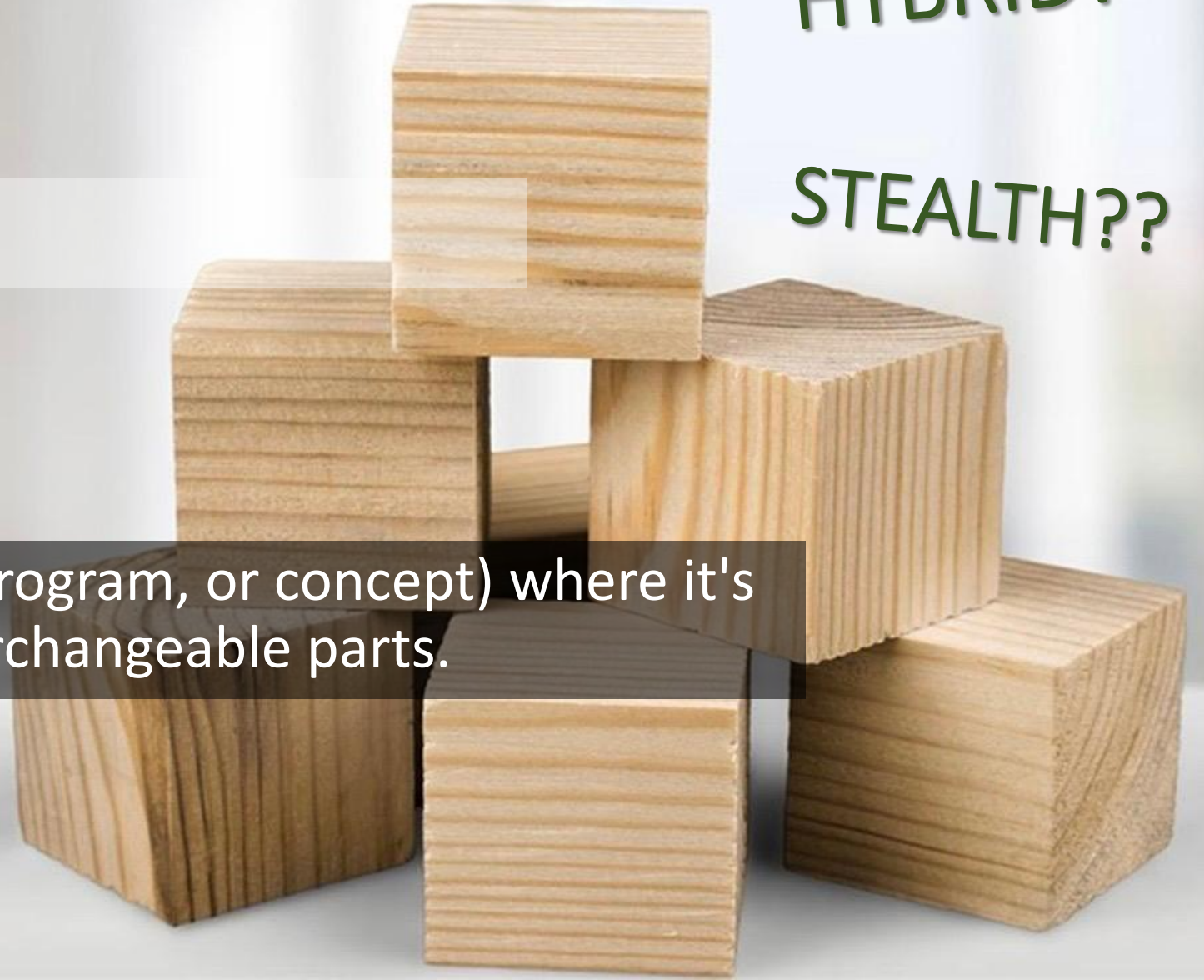
The Power of Modularity

THE FUTURE AHEAD...

HYBRID?

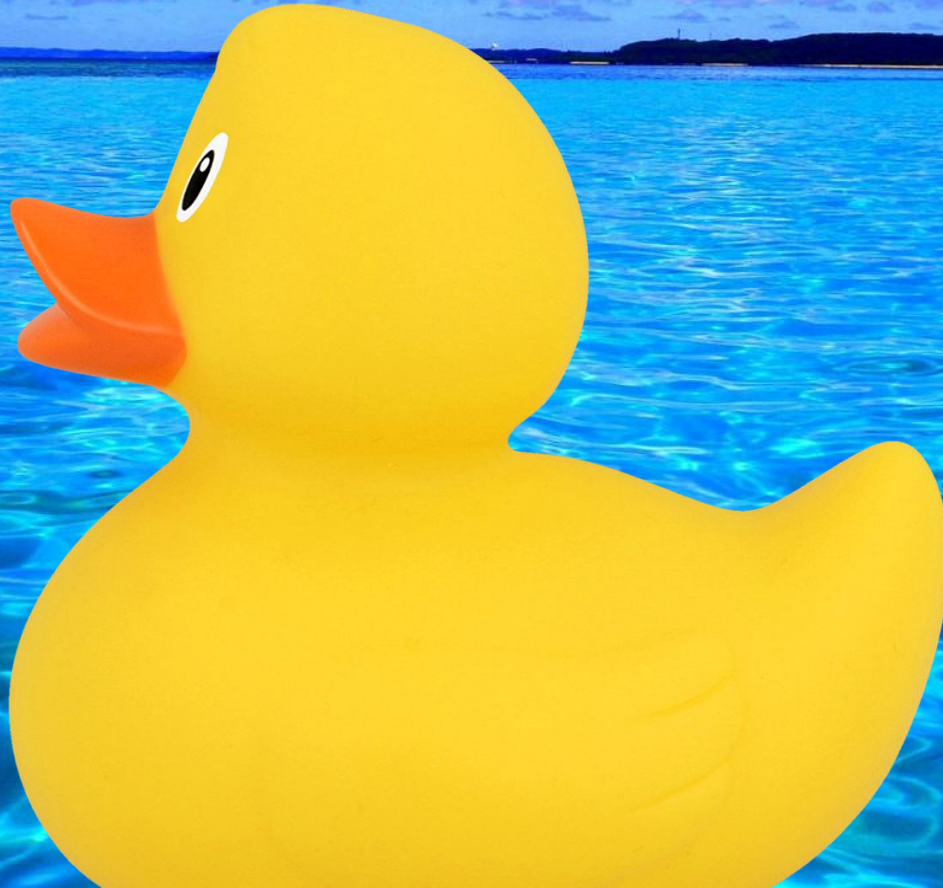
STEALTH??

Design of a system (product, program, or concept) where it's made up of independent, interchangeable parts.



THE DUCK PROBLEM

EVERYBODY'S PROBLEM





GUARDA NACIONAL REPUBLICANA
UNIDADE DE CONTROLO COSTEIRO E DE FRONTEIRAS

Largo da Estação Marítima de Alcântara-Mar, 1399-049 Lisboa
Tel. Fixo: 21 393 71 00

